



imb

ANNUAL STATISTICAL REPORT

Reporting on 2019 Data



Vision

A multitude from every language, people, tribe, and nation knowing and worshiping our Lord Jesus Christ.

Rev. 7:9

Mission

To serve Southern Baptists in carrying out the Great Commission to make disciples of all nations.



Together we're reaching the **M U L T I T U D E S**

Dear Partners,

How grateful we are for those who fuel mission work among the nations by praying, giving, going, and sending! Thank you for your investment in the Revelation 7:9 vision, where we see heaven as it will be, with a great multitude from every nation, all tribes, peoples, and languages standing before the throne and the Lamb.

As you will see from this report, our prayers for workers in the harvest have resulted not only in workers but in an eternal harvest of souls. We have cause for rejoicing as we see what the Lord is doing among and through our missionaries and partners. The report also helps us understand where we need to focus our energies and resources as it identifies peoples and places where there is no witness. Seeing the numbers of souls who die daily without any indication that they have confessed Jesus as Lord is a sobering reminder of the significance of our witness and the priority of our 2025 Targets.

As you read through this report, please join us in praising God for those who are being reached. And continue to pray that the gospel will be proclaimed to all who have yet to hear.

Blessings,

Paul Chitwood

Global Highlights



12,368

NEW CHURCHES PLANTED



89,325

NEW BELIEVERS



47,929

BAPTISMS



90,532

RECEIVED LEADERSHIP
TRAINING



3,615

TOTAL FIELD
PERSONNEL



535,325

HEARD GOSPEL
WITNESS

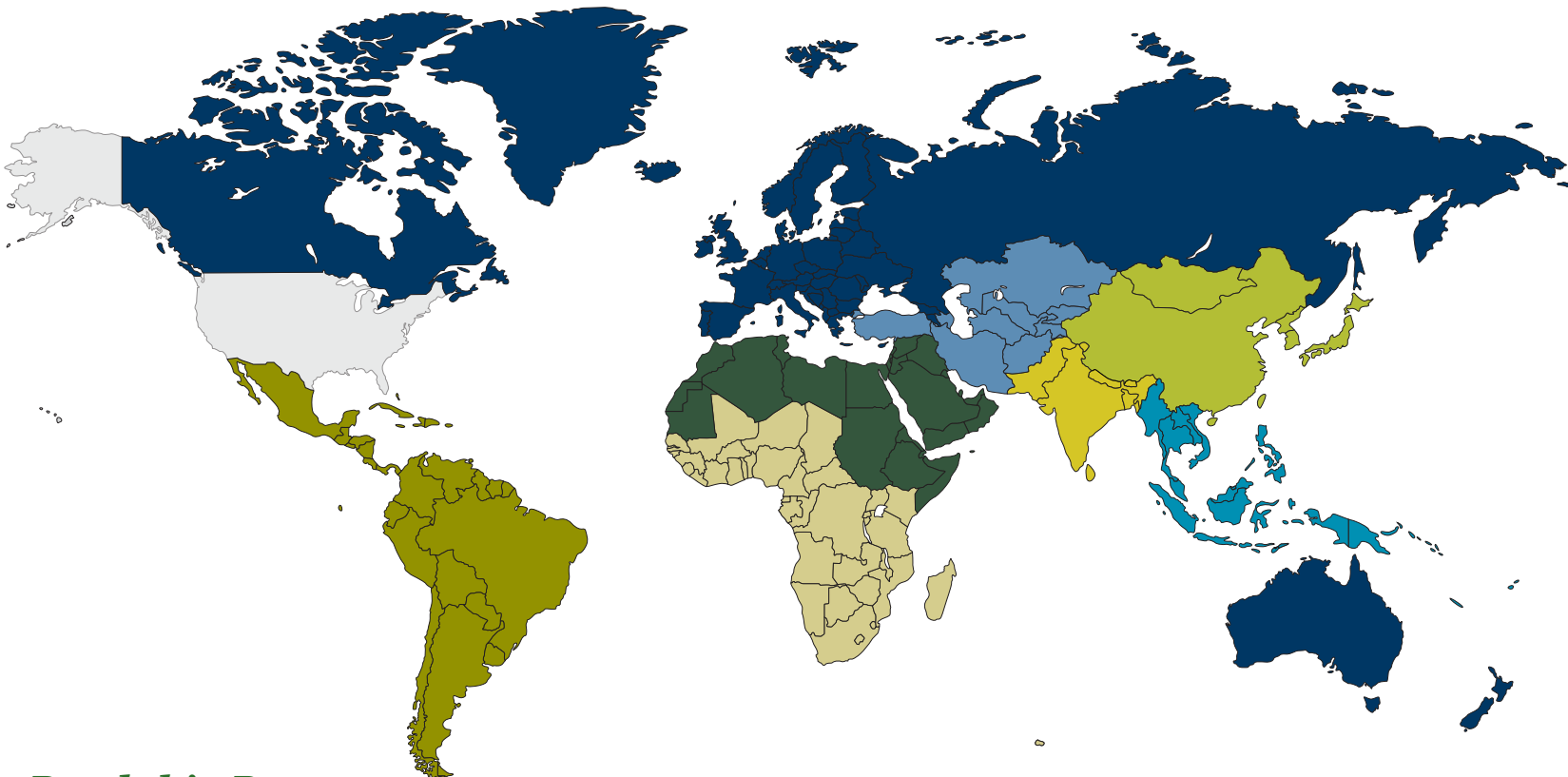


396,499

OPPORTUNITIES
TO RESPOND

Affinity Table of Contents — Click on the page numbers to jump directly to an Affinity

AMERICAN PEOPLES.....	10-15	EAST ASIAN PEOPLES.....	28-33	SOUTH ASIAN PEOPLES.....	46-51
CENTRAL ASIAN PEOPLES.....	16-21	EUROPEAN PEOPLES.....	34-39	SOUTHEAST ASIAN PEOPLES.....	52-57
DEAF PEOPLES.....	22-27	NORTHERN AFRICAN AND MIDDLE EASTERN PEOPLES.....	40-45	SUB-SAHARAN AFRICAN PEOPLES ...	58-63



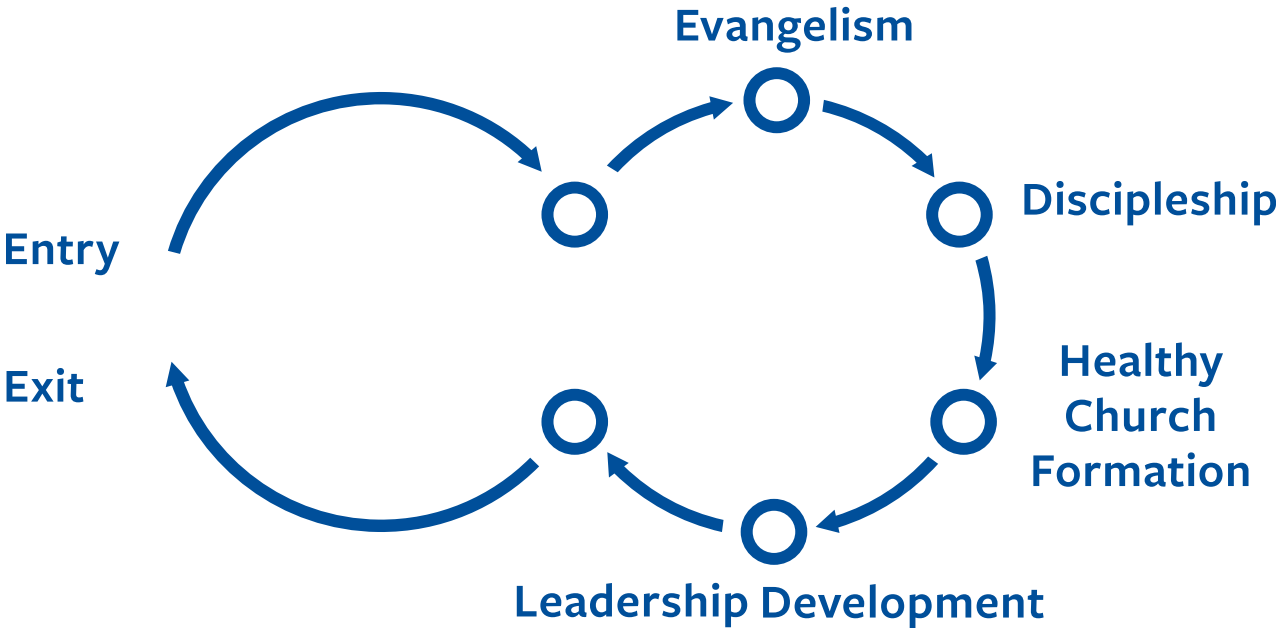
How to Read this Report

THE FORMAT: This annual statistical report, based on 2019 data, looks initially at global totals and trends. Then, each of the nine global affinities that make up the global totals are examined in greater detail. The report and associated numbers are based upon ministry faithfulness and the resulting impact in the six core components of the missionary task. The numbers and examples provided represent work done by IMB personnel or their baptistic partners, as reported by IMB field leaders. Care has been taken to provide accurate numbers that represent IMB's commitment, like the Apostle Paul, to not report upon work done outside of the sphere apportioned to us by the Lord (2 Cor 10:12-18).

THE NUMBERS: The large numbers display the 2019 statistic for that category. Approximate population numbers and dying daily numbers are calculated using United Nations Department of Economic and Social Affairs 2019 World Population Prospects, CIA World Factbook 2020 Estimates of birth and death rate statistics, and IMB global population and evangelical Christian estimates. The total personnel number includes all field personnel employed by the IMB plus team associates. Team associates are individuals or couples who are part of an IMB missionary team after being assessed and job-matched, but who are not funded by the IMB.

Global Progress

Six Components of the Missionary Task



EVANGELISM

HEARD WITNESS
535,325

Trend Analysis - Globally, the number of individuals who had an opportunity to respond to the gospel in 2019 increased nearly nine percent from the previous year. This points to the faithfulness of IMB missionaries and their close indigenous baptistic partners as they continue to share the gospel boldly. Given this increase in gospel sharing, it is hardly surprising there have been corresponding increases in the number of individuals seeking to know more about Jesus Christ, as well as those who committed their lives to following Him. As it is the Lord who ultimately changes hearts, we celebrate His moving in the lives of those who heard. At the same time, with an over 200,000 net increase in global population daily, the need for every disciple of Christ to share the gospel regularly is apparent. Research indicates that evangelical Christians are currently not sharing the gospel regularly enough to keep up with population growth worldwide.

BECAME BELIEVERS
89,325



DISCIPLESHIP

BAPTIZED
47,929

Trend Analysis - The discipleship metrics, such as believers in Bible study and baptized believers meeting, show a decrease compared to previous years. The primary driver for this trend appears to be a continued loss of access by IMB personnel to some active harvest fields. Over the last few years, several global regions have suffered governmental persecution resulting in the expulsion of IMB missionaries from certain countries. Given the loss of access, the downward trends most likely do not represent church planting realities but rather IMB's inability to report on such efforts done through Baptist partners. Both the persecution and the decrease in IMB personnel in those locations should cause us to intercede with the Father for continued boldness and sending.

BIBLE STUDY PARTICIPANTS
174,393



HEALTHY CHURCH FORMATION

NEW GROUPS FORMED
15,394

Trend Analysis - Praise the Lord for His clear work in growing His church! While the Holy Spirit continues to move in extraordinary ways globally, parts of South and Southeast Asia have been especially open to the gospel. In recent years, the number of new groups and churches formed has steadily increased. Globally, healthy church tracking processes and software tools are continuing to see widespread use among IMB teams. Such tools have helped indigenous pastors and church planters learn to start churches and disciple those churches to health and multiplication. Coupled with the rise in indigenous leadership training and development by IMB personnel, groups intending to become churches continue to grow in health with biblically equipped indigenous leaders.

NEW CHURCHES STARTED
12,368



LEADERSHIP DEVELOPMENT

CHURCH PLANTING TRAINING
38,866

Trend Analysis - There continues to be a marked increase in the number of individuals who have received advanced theological, church planting, and pastoral training. This change is due to a greater emphasis in recent years on the entire missionary task (all six of the core components – Entry, Evangelism, Discipleship, Healthy Church Formation, Leadership Development, Exit to Partnership). While long-term discipleship and leadership development have always been a part of the missionary task, in the last 11 years there have been examples, case studies, and dissertations demonstrating more healthy multiplying church planting when the church planter from the outset developed holistic strategies encompassing all six of the core missionary components. IMB teams and their close indigenous partners have been building entry and gospel strategies with a forward view to the end goals of healthy church formation and leadership development. This continues to result in increases of theological and other long-term discipleship training.

ADVANCED THEOLOGICAL TRAINING
33,068

Global Realities

6,363

Unique Languages Worldwide
including 367 deaf languages

3,213

Languages have over 10,000 speakers.

2,504

Languages have at least one Scriptural
translation project currently underway.

204

Languages are listed as still in need of
Scripture translation projects, with another
1,536 potentially needing such projects.

“I trust that God’s blessing will rest upon
our efforts to supply the people with His
word in a form that all can understand.”

— R.H. Graves

FMB Missionary to China for 56 years (1870 FMB Annual Report)

Language and translation data provided by progress.Bible™ as of December 31, 2019.
(<https://progress.Bible>)

154,937
DYING DAILY
WITHOUT CHRIST
(2 people every second)

GLOBAL POPULATION
7,662,517,383



Growth and death rate data from CIA World Factbook
(www.cia.gov/library/publications/the-world-factbook/docs/profileguide.html)

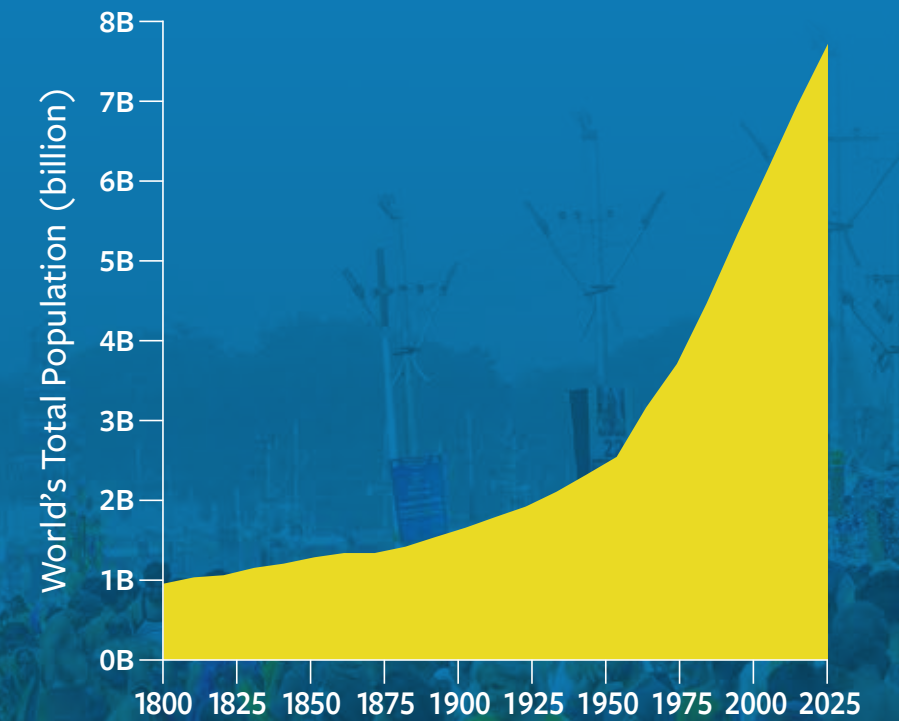
1,498,402

PEOPLE ARE ADDED TO THE
GLOBAL POPULATION WEEKLY
(Roughly 215,057 added
every single day)

Our best estimate of gospel sharing by Christians
worldwide reveals a staggering reality — We are failing
to keep up with the global population growth rate!
While almost 1.5 million people are added to the global
population every week, recent estimates seem to indicate
that on average evangelical Christians only share the
gospel around 275,000 times per week. This reality should
spur Christians everywhere to share their faith regularly.

Across the globe, God continues to raise up missionaries
from the nations to go to the nations. IMB’s Globalization
effort is an instrumental part of the core missionary
component “Exit to Partnership,” as many of these
global missionaries are coming from mission fields
where IMB personnel have labored for many years
alongside indigenous partners in the planting of healthy
reproducing churches. Since a major component of
church health is local indigenous ownership in the Great
Commission, these churches are sending missionaries to
reach the nations. Only as more and more Christians from
all nations share the gospel on a regular basis to those
near and far will we win this war of gospel sharing.

GLOBAL POPULATION GROWTH 1800-2025



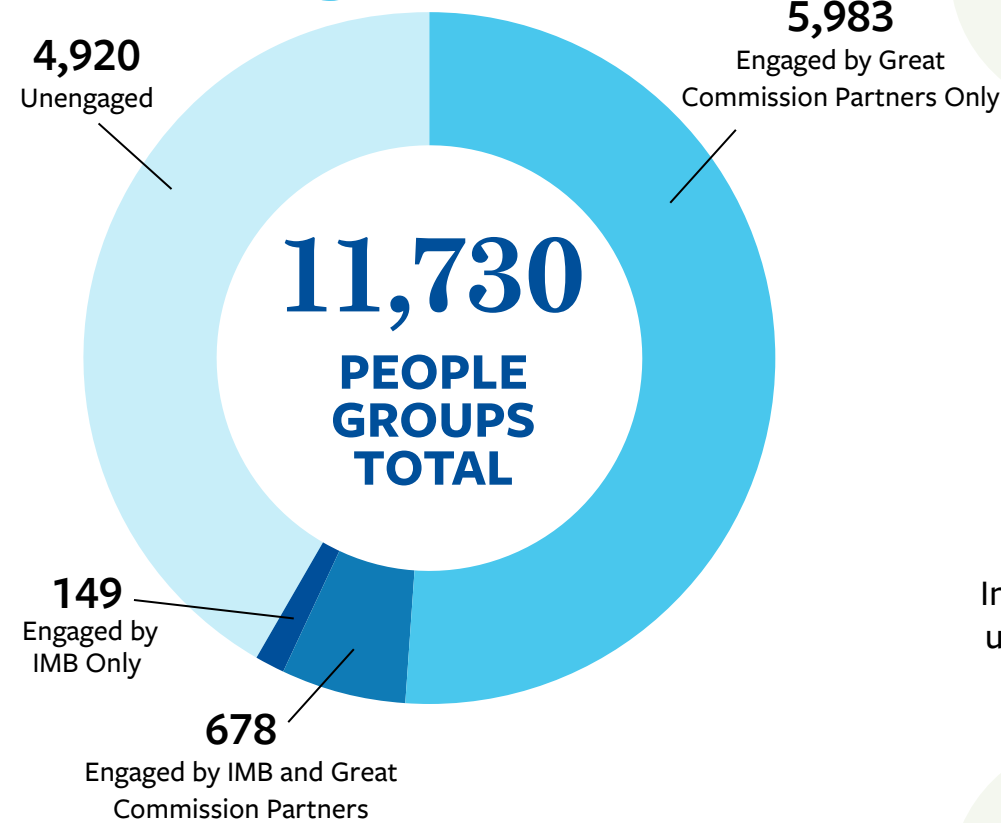
Data Source: United Nations, Department of Economic and Social Affairs, Population
Division (2019). World Population Prospects: The 2019 Revision. New York: United Nations.

“And how are they to
believe in him of whom they
have never heard?”

— Romans 10:14 (ESV)

Global Summaries

ENTRY



21
Indigenous people groups reverted to unengaged status due to loss of engagement by IMB personnel or their partners.

EXIT TO PARTNERSHIP

IMB ENGAGEMENT IS NO LONGER NECESSARY FOR SUSTAINABLE GROWTH

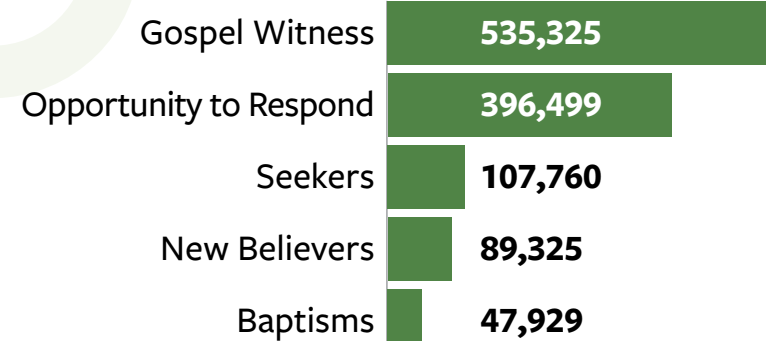
214
Indigenous people groups have self-sustaining ownership in the missionary task

91
Indigenous people groups are engaging other people groups **inside** their own country

40
Indigenous people groups are engaging other people groups **outside** their own country



EVANGELISM



1,209
Indigenous peoples and urban centers engaged by IMB teams

117
New indigenous engagements of people groups or urban centers



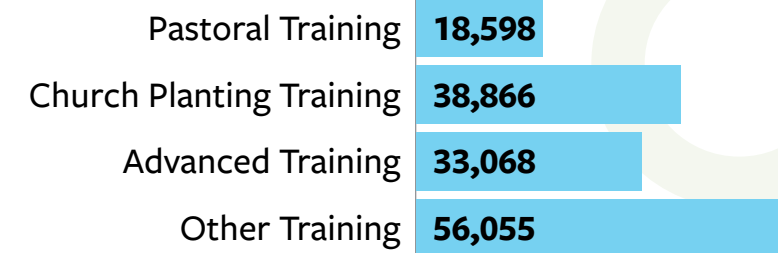
DISCIPLESHIP

174,393
On-going Bible Study participants

36,642
Being personally mentored



LEADERSHIP DEVELOPMENT



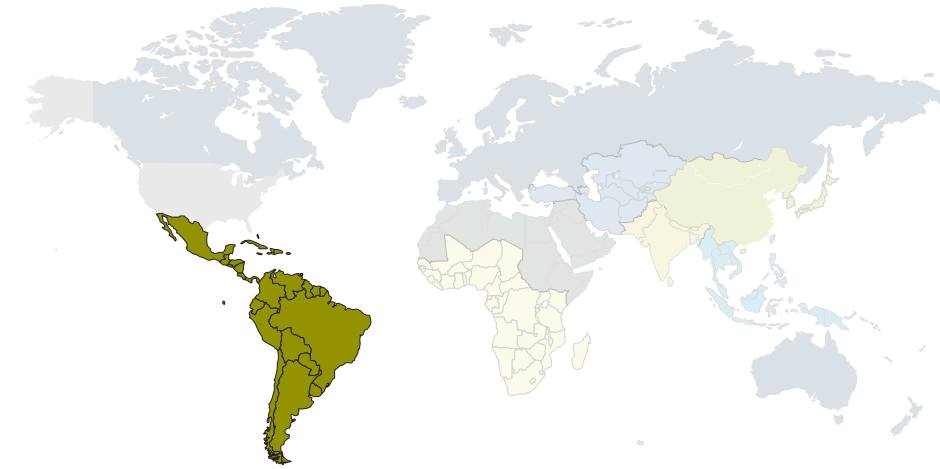
HEALTHY CHURCH FORMATION

New Groups	15,394
Groups	35,659
New Churches	12,368
1 st Generation	645
2 nd Generation	342
3 rd Generation	11,381
Total Churches	57,886
1 st Generation	16,205
2 nd Generation	5,314
3 rd Generation	36,367
Baptized Believers Meeting	364,530



AMERICAN PEOPLES

Highlights | AMERICAN PEOPLES




23
NEW CHURCHES
PLANTED


28,286
HEARD GOSPEL WITNESS


26,544
OPPORTUNITY TO RESPOND


2,195
NEW BELIEVERS


578
BAPTISMS


3,518
LEADERSHIP TRAININGS


1
NEW ENGAGEMENT

Stories from the Field

AMERICAN PEOPLES



ENTRY

Deep in the desert mountains of Mexico is a small community completely isolated from the outside world with a language and culture that is quickly disappearing. Because of the community’s isolation and devout adoration of idols, it has been almost impossible to reach them with the truth of the gospel. However, after a team of Mexican nationals and summer students worked in the area researching and building relationships, the doors have opened for a U.S. church partner to begin working with a local Mexican seminary to bring the truth to this community with no known believers.



EVANGELISM

Through a soap-making class, Afro-Ecuadorians are learning a valuable and useful skill that has earned governmental recognition in their community. While learning about business and helping their community, they are also being taught the gospel in a very clear way that is transforming their lives. Through this method of evangelism, almost 50 Afro-Ecuadorians have come to a saving knowledge of Christ over the past year.



DISCIPLESHIP

As a new believer, a leader of an indigenous village in Ecuador began to feel convicted that his tribes’ healing rituals — using certain rocks and other sacred objects to channel the earth’s healing power — was contrary to what the Bible teaches. One IMB missionary couple has a long-time relationship with this tribe and is mentoring this leader and other leaders of nearby villages as they seek to follow the Holy Spirit on this issue.



HEALTHY CHURCH FORMATION

In Guatemala, there is a church plant intent on sharing the gospel with those around them. The church has a missional foundation that is resulting in people coming to faith. As the church grows and leaders are trained, the church is guiding its members and caring for those in the congregation, often holding church services in the homes of those who are sick and unable to attend regular meetings.



LEADERSHIP DEVELOPMENT

Among the N people group, six leading couples are learning about biblical and culturally relevant ways to worship the Lord. These couples are totally committed to the Lord and eager to learn. As they learn, they are telling everyone they meet how Christ has changed their lives.



EXIT TO PARTNERSHIP

In 2019, an IMB family had to exit their engagement among the P people of Guatemala much sooner than they had expected. Because of this family’s seventeen year dedication to the Missionary Task, the P people now have several healthy churches and equipped leaders who continue to reach their own people.

“The Lord said to me, ‘You are my Son; today I have begotten you. Ask of me, and I will make the nations your heritage, and the ends of the earth your possession.’”

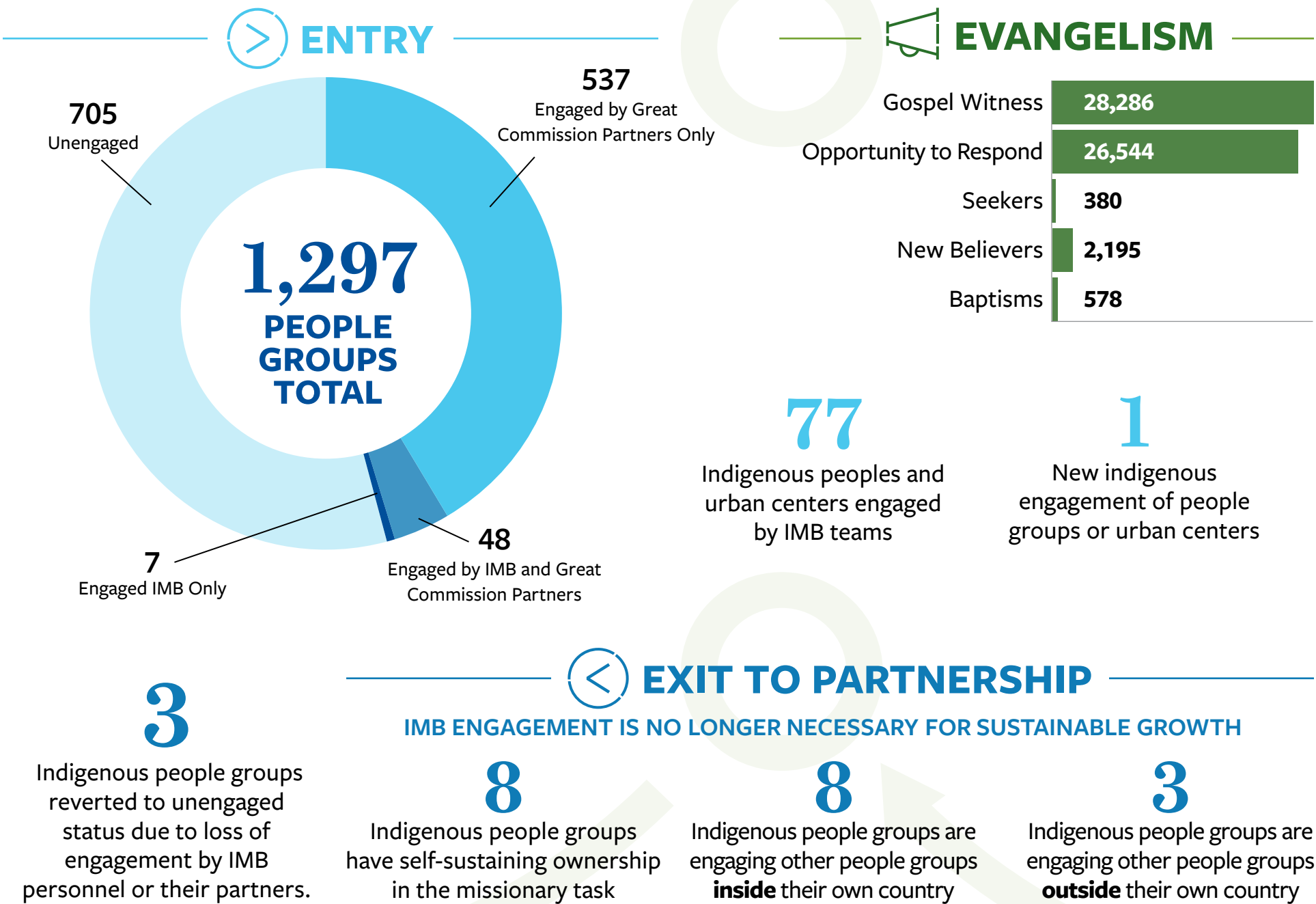
— Psalm 2:7b-8 (ESV)

10,283
DYING DAILY
WITHOUT CHRIST

POPULATION 633,931,840

Approximate numbers calculated using IMB global population and evangelical Christian estimates, excluding the United States.

Summaries



AMERICAN PEOPLES

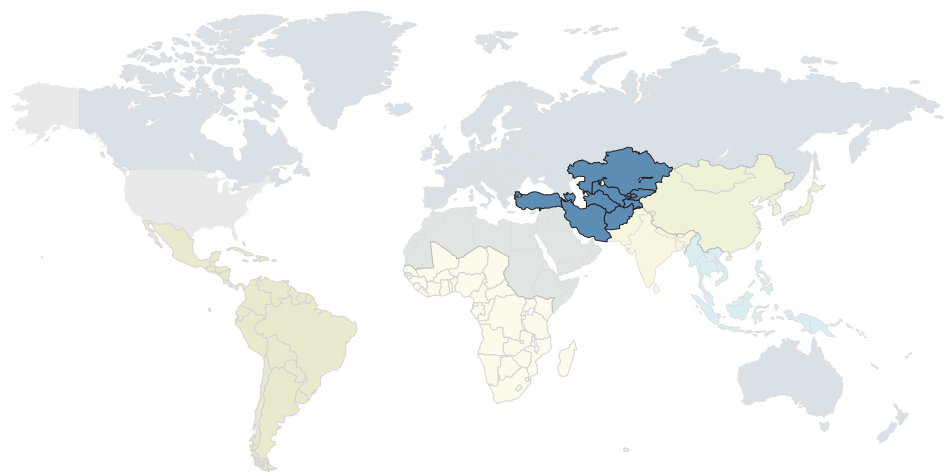
HEALTHY CHURCH FORMATION

New Groups	102
Groups	186
New Churches	23
1 st Generation	18
2 nd Generation	5
3 rd Generation	0
Total Churches	140
1 st Generation	123
2 nd Generation	17
3 rd Generation	0
Baptized Believers Meeting	3,518



CENTRAL ASIAN PEOPLES

Highlights | CENTRAL ASIAN PEOPLES




62
NEW CHURCHES
PLANTED


48,648
HEARD GOSPEL WITNESS


20,546
OPPORTUNITY TO RESPOND


2,192
NEW BELIEVERS


1,265
BAPTISMS


937
LEADERSHIP TRAININGS


1
NEW ENGAGEMENT

Stories from the Field



**7,217
DYING DAILY
WITHOUT CHRIST**

POPULATION 376,406,550

Approximate numbers calculated using IMB global population and evangelical Christian estimates.



EVANGELISM

Our IMB teams created 9-minute “Creation to New Life in Christ” videos for 99 different languages spoken by the peoples of Central Asia. In 2019, these videos were shown and promoted through social media, resulting in 21 full views of the gospel videos every day of the year. An average of 17 people a day clicked the like or share buttons. Work has begun to produce a gospel video for the last 11 languages of Central Asia, which have no Bible tools of any kind.



DISCIPLESHIP

In Central Asia, one of the world’s most repressive countries has caused thousands of young people to question their faith and relocate to a more open neighboring country where our IMB team is providing discipleship opportunities for many who have come to faith in Christ. This year, our IMB team enlisted the help of several Baptist churches from the USA and paired them with new believers from the oppressive country for a two week discipleship sprint. Over 30 believers were trained how to make their churches healthier and how to properly share the cost of following Jesus. During the next three weeks, 68 professed new faith in Christ.



HEALTHY CHURCH FORMATION

In one Central Asian war-torn area, using money given by Southern Baptists for relief projects, teams labored for many years. Now all over this area individuals have put their faith in Christ. Unfortunately, because of persecution from the community, few churches have formed. This year at great risk, several believers, following teaching about church health from one team, decided to covenant together and meet as a church.



LEADERSHIP DEVELOPMENT

Despite growing government pressure in Central Asia, a community Christian worship service was planned by the pastors of several churches. Christians from over 20 churches met for the worship service — an amazing fact since the number of attendees represents one-tenth of all the Christians in the country. As an IMB worker looked around the room, he saw healthy church leaders, many who had been trained this year in theology and Bible-teaching courses taught by an IMB team.



EXIT TO PARTNERSHIP

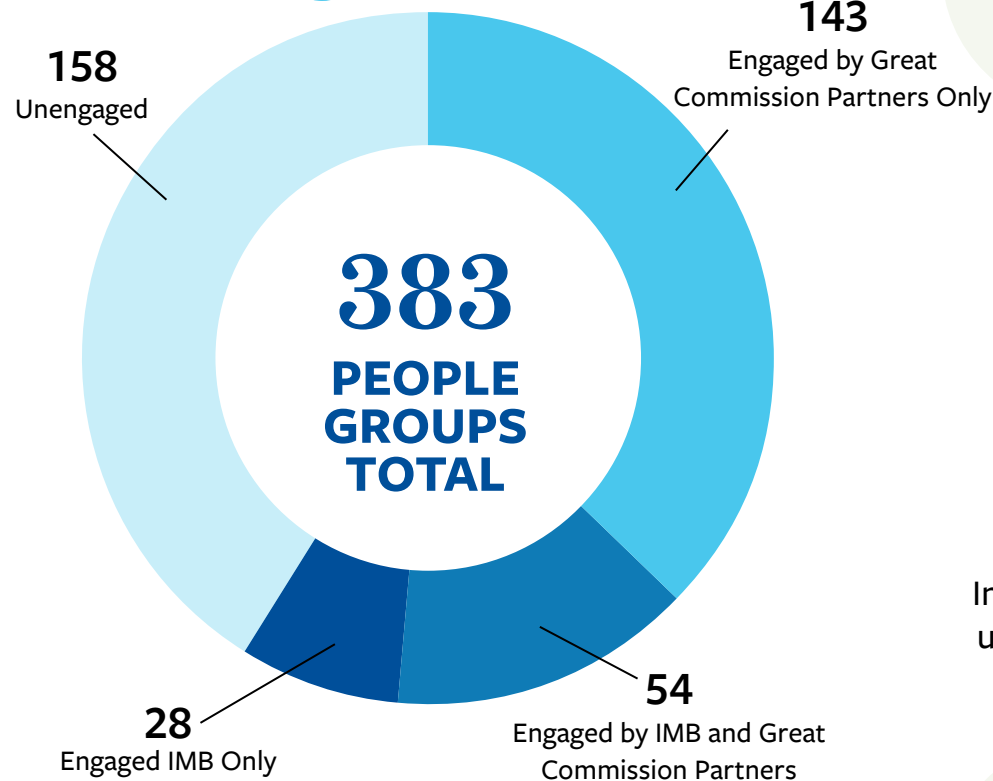
Twenty-five years ago, there were few believers in the countries of Central Asia under Communism. Now, several of the countries have movements of churches which are starting to send their members to less reached people groups. An IMB worker in a large city is partnering with one of these cross-cultural Central Asians who trained 85 pastors this last year, many in a country where our workers are unable to train pastors themselves. A man who came to faith through the ministry of an IMB worker is now helping an IMB church-planting team in another country to engage a people group which has no church.

“Therefore, let it be known to you, brothers and sisters, that through this man forgiveness of sins is being proclaimed to you. Everyone who believes is justified through him from everything that you could not be justified from through the law of Moses.”

— Acts 13:38-41 (CSB)

Summaries

> ENTRY



5
Indigenous people groups reverted to unengaged status due to loss of engagement by IMB personnel or their partners.

< EXIT TO PARTNERSHIP

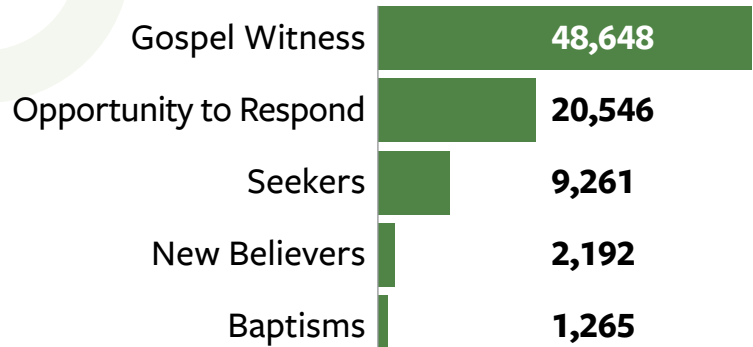
IMB ENGAGEMENT IS NO LONGER NECESSARY FOR SUSTAINABLE GROWTH

6
Indigenous people groups have self-sustaining ownership in the missionary task

16
Indigenous people groups are engaging other people groups **inside** their own country

8
Indigenous people groups are engaging other people groups **outside** their own country

EVANGELISM



113
Indigenous peoples and urban centers engaged by IMB teams

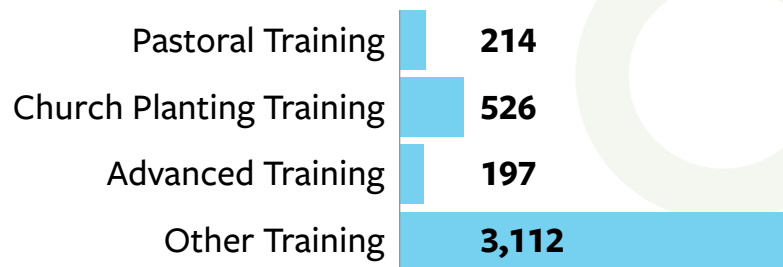
1
New indigenous engagement of people groups or urban centers

DISCIPLESHIP

6,971
On-going Bible Study participants

719
Being personally mentored

LEADERSHIP DEVELOPMENT



CENTRAL ASIAN PEOPLES

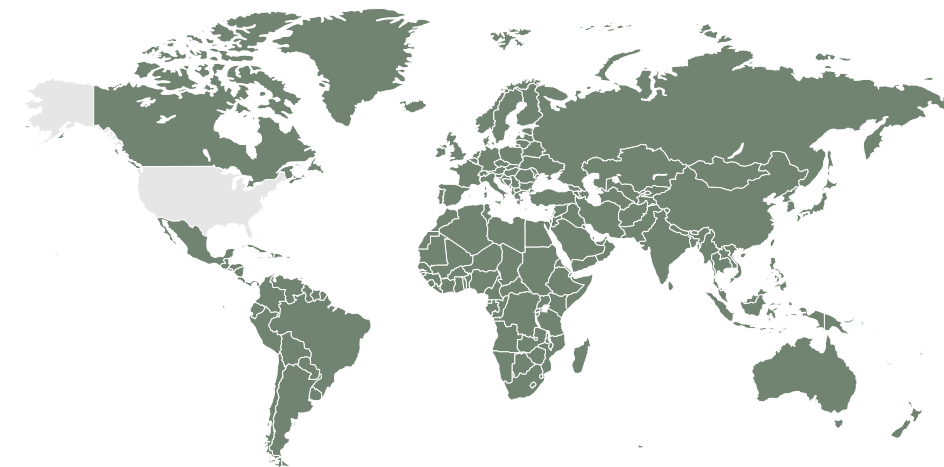
HEALTHY CHURCH FORMATION

New Groups	163
Groups	317
New Churches	62
1 st Generation	41
2 nd Generation	14
3 rd Generation	7
Total Churches	847
1 st Generation	479
2 nd Generation	187
3 rd Generation	181
Baptized Believers Meeting	20,601



DEAF PEOPLES

Highlights | DEAF PEOPLES




15
NEW CHURCHES
PLANTED


8,356
HEARD GOSPEL WITNESS


3,938
OPPORTUNITY TO RESPOND


193
NEW BELIEVERS


138
BAPTISMS


113
LEADERSHIP TRAININGS


3
NEW ENGAGEMENTS

Stories from the Field



1,438
DYING DAILY
WITHOUT CHRIST
POPULATION 67,938,650

Approximate numbers calculated using IMB global population and evangelical Christian estimates.



ENTRY

Recently Deaf Southeast Asian partners worked overtime and holidays to save vacation time and money to travel to a nearby country to work among Deaf believers on Scripture translation process and church development, training national leaders to share their faith with others in their city and country.



EVANGELISM

The seeds sown in South Asia for more than six years by now-retired workers recently sprang to life as one of our Deaf apprentice missionaries shared Scripture stories with a group in the capital city. Several Deaf then dreamed of Jesus and seven professed Christ and followed in believer’s baptism.

“**Declare his glory among the nations, his marvelous deeds among all peoples.**”

— 1 Chronicles 16:24 (NIV)



DISCIPLESHIP

By 2019, one of our Macedonia Program workers, who began outreach as a Journeyman among the Deaf of Southeast Asia, led several Deaf nationals to faith and witnessed the birth of a stable new Deaf church in a city. These young believers are being discipled and reaching out to other Deaf in cities and towns close by where there are plans for new believers to begin new churches.



HEALTHY CHURCH FORMATION

Early in 2019, Deaf Southeast Asians in one major city pooled their monthly income to rent an inexpensive “store-front” building where they could worship together, set up a studio for scripture translation and provide a guest room for other partners. This Deaf church now is reaching out to multiple Deaf communities in their country to evangelize, plant churches, work on the Bible translation process with other new believers and assist our IMB colleagues completing Bible stories in all the neighbouring countries of Southeast Asia.



LEADERSHIP DEVELOPMENT

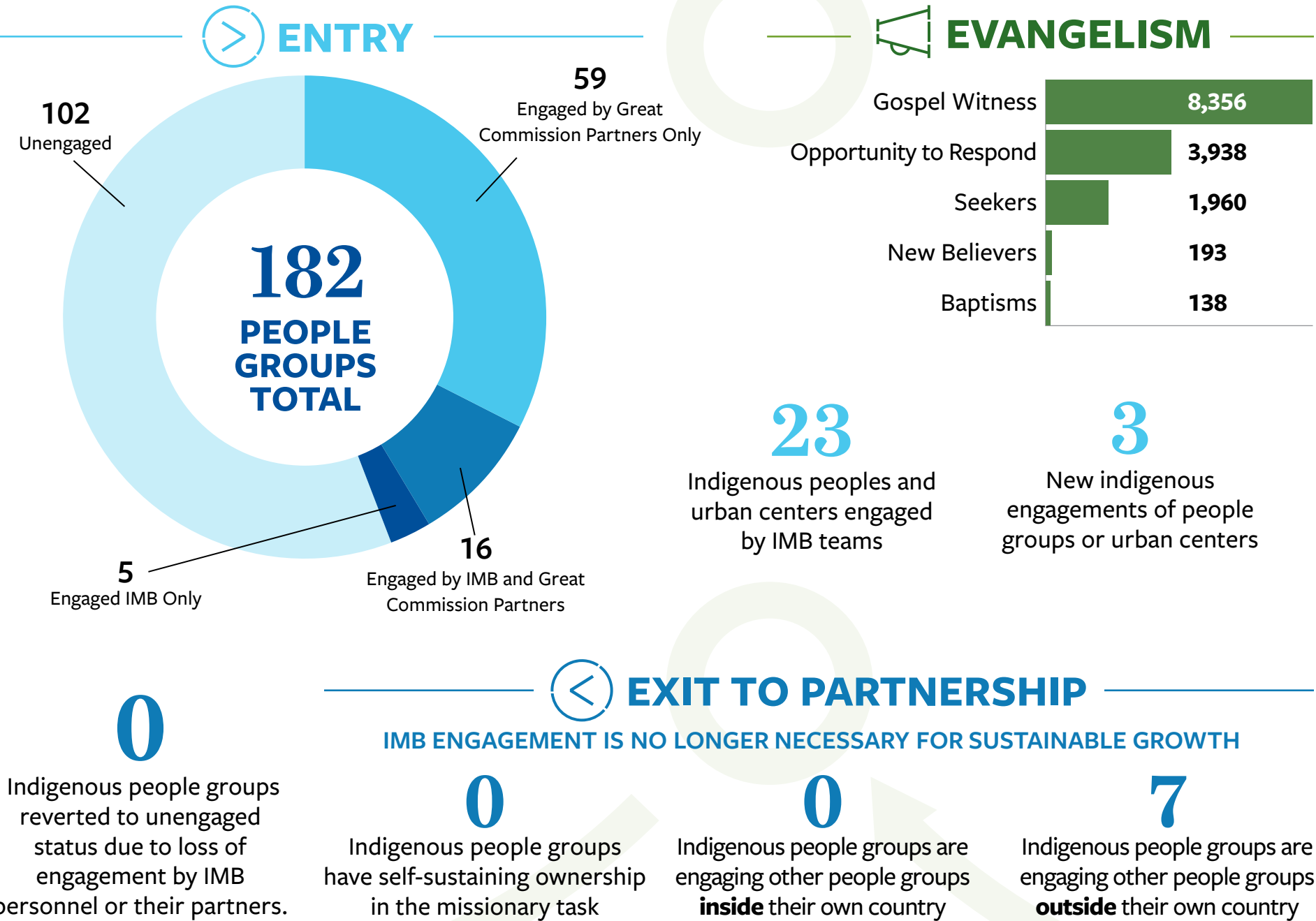
In Sub-Saharan Africa, two Deaf from another faith background came to faith and were baptized. In 2019, they came to the Deaf Theological Training Center in Tennessee where they received training in Old Testament, New Testament and church planting. These two young men have returned to West Africa and led other Deaf to faith, baptized them and started church planting in several towns.



EXIT TO PARTNERSHIP

In September 2019, a group of 40 Deaf gathered outside a city in Europe for training in church planting and partnership. Deaf national partners working in West Africa, Southeast Asia, Central Asia, Eastern Europe, Central America, and East Asia gathered for this training. This new network of Deaf evangelicals is now making plans to work together in the months to come for global outreach in places where Deaf communities have no gospel witness.

Summaries



<

EXIT TO PARTNERSHIP

0

Indigenous people groups reverted to unengaged status due to loss of engagement by IMB personnel or their partners.

0

Indigenous people groups have self-sustaining ownership in the missionary task

0

Indigenous people groups are engaging other people groups **inside** their own country

7

Indigenous people groups are engaging other people groups **outside** their own country

📢

EVANGELISM

Gospel Witness

8,356

Opportunity to Respond

3,938

Seekers

1,960

New Believers

193

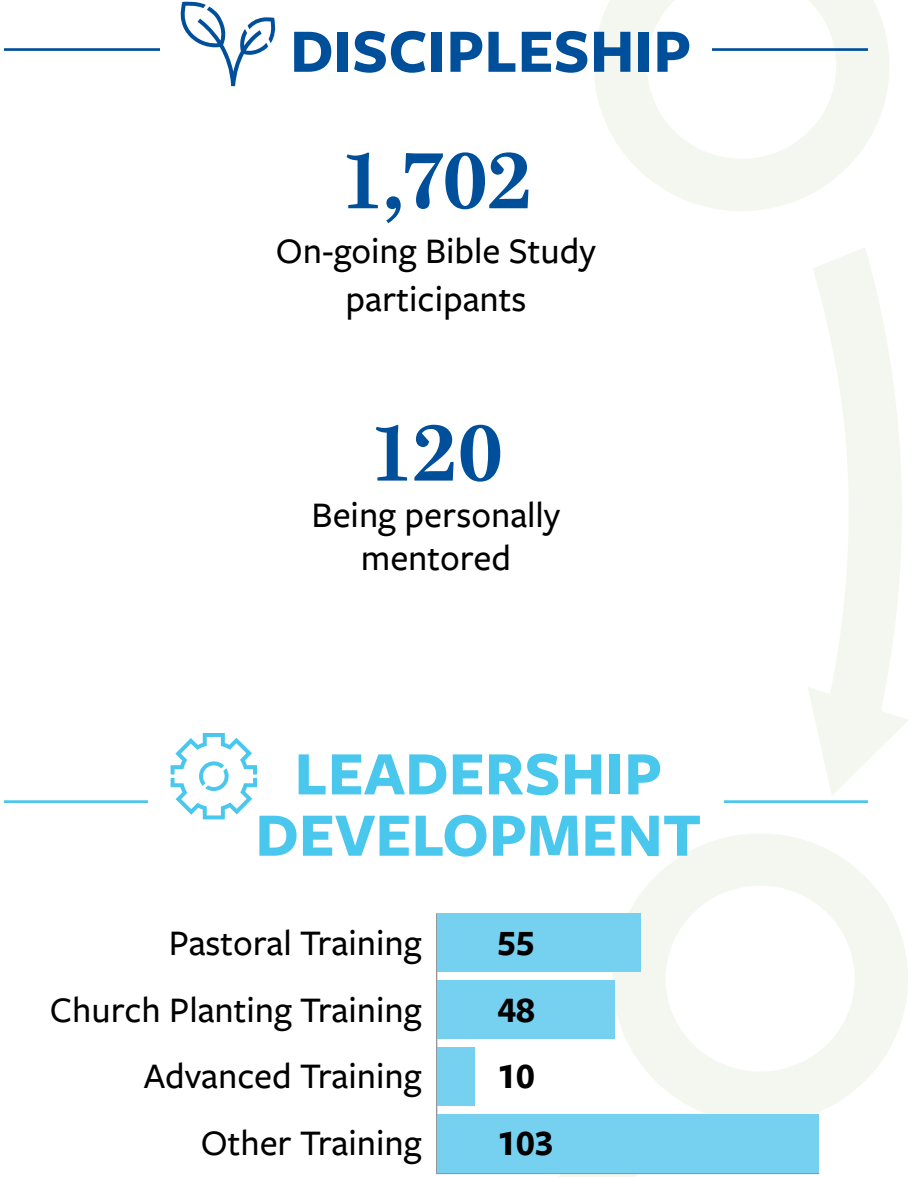
Baptisms

138

23

Indigenous peoples and urban centers engaged by IMB teams

3

New indigenous engagements of people groups or urban centers

DEAF PEOPLES

🏠

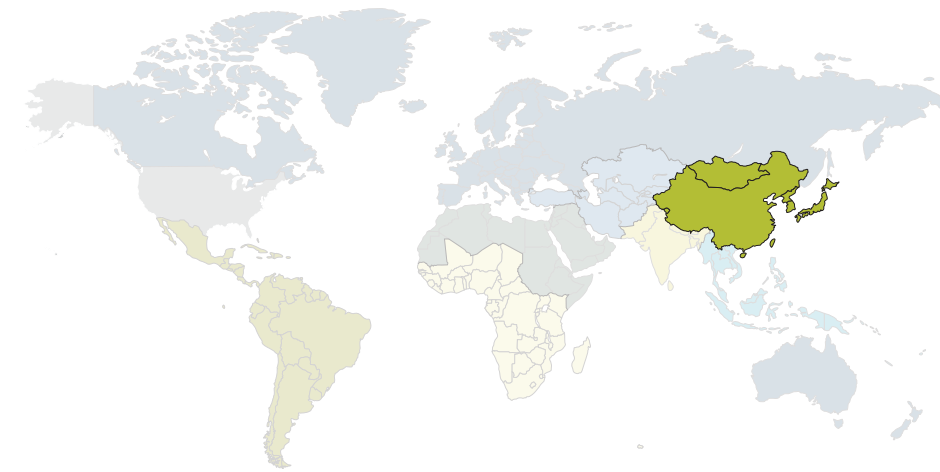
HEALTHY CHURCH FORMATION

New Groups	10
Groups	30
New Churches	15
1 st Generation	15
2 nd Generation	0
3 rd Generation	0
Total Churches	181
1 st Generation	164
2 nd Generation	17
3 rd Generation	0
Baptized Believers Meeting	2,030



EAST ASIAN PEOPLES

Highlights | EAST ASIAN PEOPLES




426
NEW CHURCHES
PLANTED



92,821

HEARD GOSPEL WITNESS



82,529

OPPORTUNITY TO RESPOND



14,548

NEW BELIEVERS



5,021

BAPTISMS



6,727

LEADERSHIP TRAININGS



4

NEW ENGAGEMENTS

Stories from the Field

EAST ASIAN PEOPLES



ENTRY

Scripture Planting is the combination of Scripture translation with Church Planting. The purpose is to create Scripture resources for people groups with limited or no Scripture resources and immediately use those resources to share the gospel, make disciples, develop leaders and grow the health of the church. In one region of East Asia, every IMB team was involved in at least one Scripture Planting project. Due to these efforts among one unreached animist people group that previously had no churches, there are now six churches. In other areas, animist people groups now have Scripture in their language and two unengaged and unreached people groups are now engaged with the gospel.



EVANGELISM

Through faithful visits and personal teaching in Japan of the MY SEED book — an introduction to Christianity created by a Japanese Christian partner — two students recently came to understand the message of the gospel and their need for the Savior. They stepped forward in obedience and accepted Jesus as their Lord and Savior.



DISCIPLESHIP

The Lord has been at work mightily among an animist people group living in the mountains of East Asia. The church has grown and there are now hundreds of believers among this remote group. As they have grown in maturity, the local church is now working to send out missionaries to reach other unreached people groups with the gospel. These local churches have since sent a missionary to reach an unreached people group in an area IMB missionaries can no longer access due to security restrictions.



HEALTHY CHURCH FORMATION

For more than 2,000 years, there was no church among an isolated East Asian people group. That is no longer the case, thanks to the prayers of Southern Baptists, the diligent efforts of IMB missionaries, and the power of the Holy Spirit. This year the first church was planted among this very difficult to reach people group!

“Blessed is the man who trusts in the Lord, and whose trust is in the Lord. For he will be like a tree planted by the water that extends its roots by a stream, and will not fear when the heat comes; but its leaves will be green, and it will not be anxious in a year of drought, nor cease to yield fruit.”

— Jeremiah 17:7-8 (NASB)



LEADERSHIP DEVELOPMENT

Eight house church leaders from one city have been trained in the use of a healthy church development strategy. They are currently applying this training to their own churches and also training hundreds of leaders in many provinces across the country. They are asking us to train a hundred more leaders in their city over the next two years.



EXIT TO PARTNERSHIP

Cross Cultural Missions (CCM) organizations are springing up in several cities in our area. Working with local churches this year, they sent mid/long-term missionaries to several other countries in Southeast Asia and Central Asia, as well as to many domestic fields. One of our key partners will be sent to a nearby country to work full time with our IMB team there.

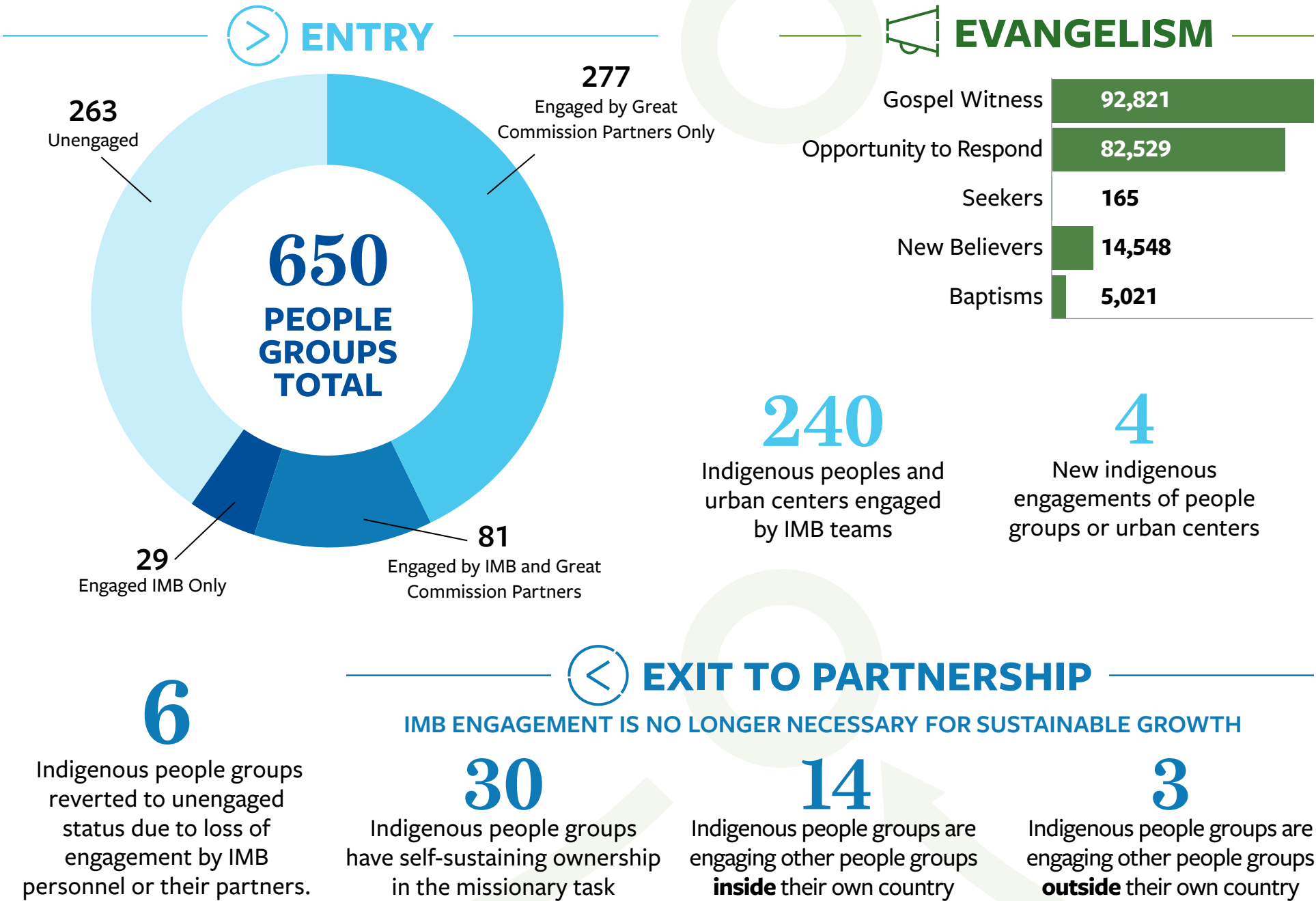
36,101

DYING DAILY
WITHOUT CHRIST

POPULATION 1,670,548,815

Approximate numbers calculated using IMB global population and evangelical Christian estimates.

Summaries



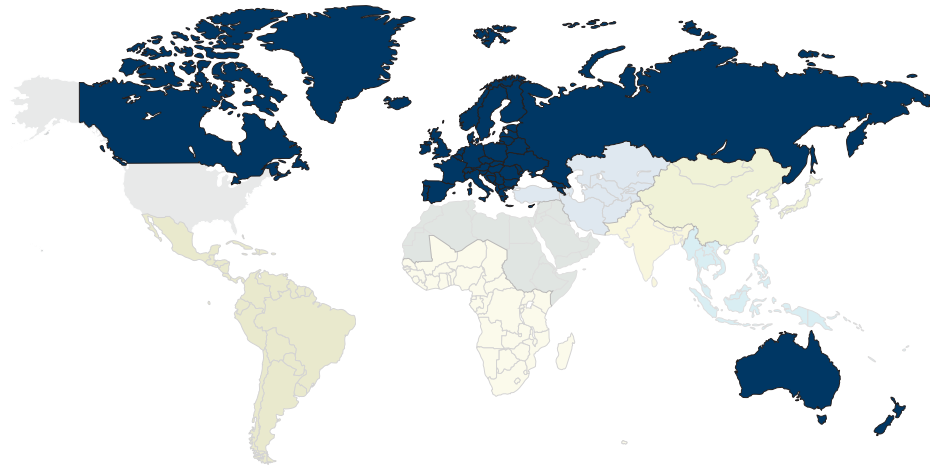
EAST ASIAN PEOPLES

HEALTHY CHURCH
FORMATION

New Groups	435
Groups	254
New Churches	426
1 st Generation	231
2 nd Generation	128
3 rd Generation	67
Total Churches	4,065
1 st Generation	2,553
2 nd Generation	1,068
3 rd Generation	444
Baptized Believers Meeting	114,388



Highlights | EUROPEAN PEOPLES




40
NEW CHURCHES
PLANTED


59,196
HEARD GOSPEL WITNESS


25,363
OPPORTUNITY TO RESPOND

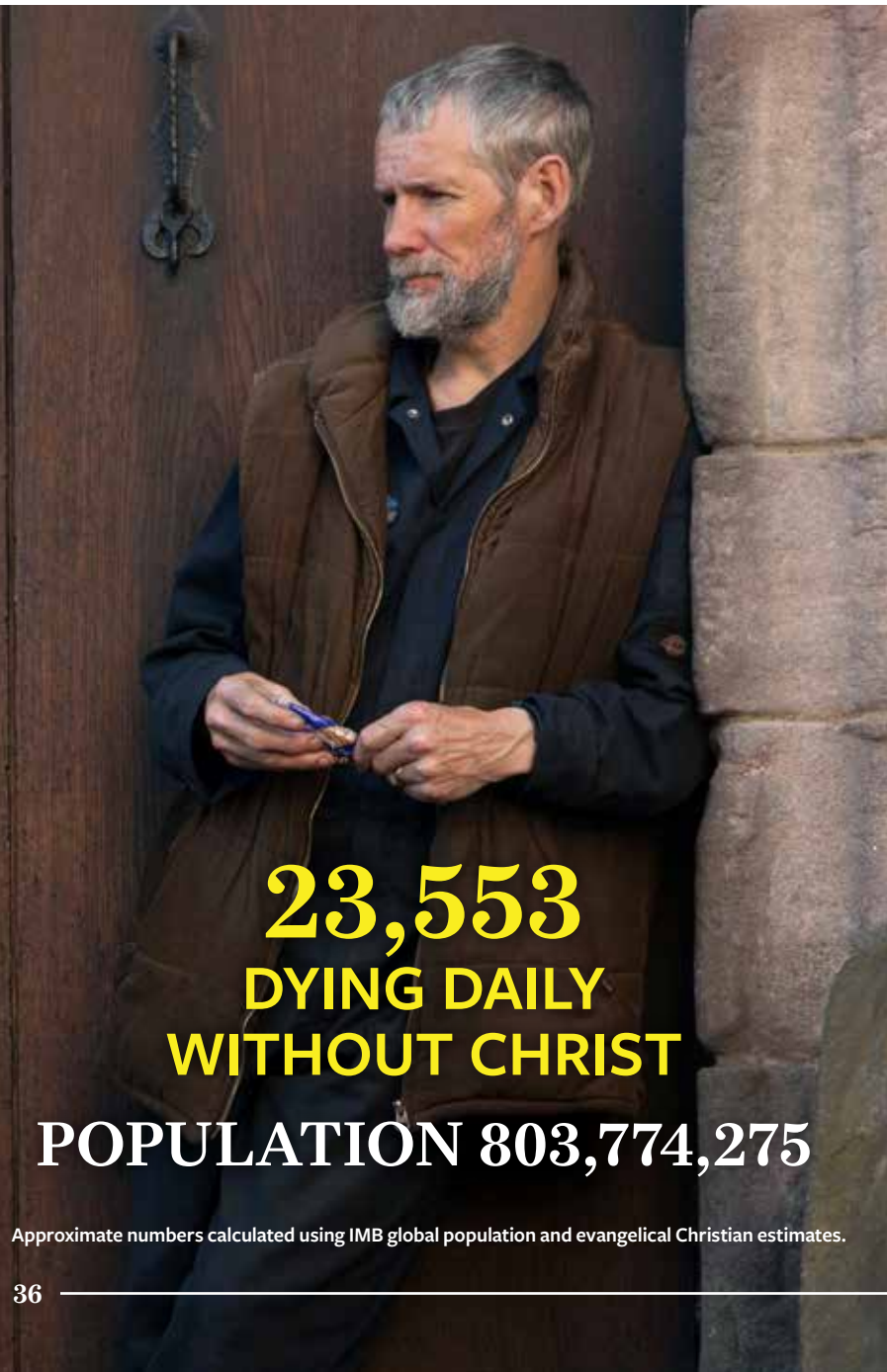

1,583
NEW BELIEVERS


682
BAPTISMS


2,536
LEADERSHIP TRAININGS


4
NEW ENGAGEMENTS

Stories from the Field



23,553
DYING DAILY
WITHOUT CHRIST

POPULATION 803,774,275

Approximate numbers calculated using IMB global population and evangelical Christian estimates.



ENTRY

“Pause Break” is a Christian community outreach at a public school. During finals weeks, churches and Christian organizations give away free food to students. One IMB worker serves as a volunteer chaplain with the Spirituality Centre and helps distribute the food, which has opened opportunities for many spiritual conversations with students from many other countries. One student said she wasn’t looking for physical food but needed spiritual food. Jesus used food and celebration all the time to share His story. This worker is following His lead.



EVANGELISM

Through prayer, evangelism goals and open dialog about progress toward those goals, we have seen national partners grow in vision for evangelism and make active, bold attempts to evangelize. One brother started a youth street evangelism ministry to train and send out young workers to start a youth movement of evangelism. Another has also taken initial steps to start his own group of youth evangelists to engage the city with support of a local church.



DISCIPLESHIP

What began as a group of men confessing sins to one another in 2019 grew into something much larger. In 2020, their confession developed into a desire for holiness and godliness. Men broke off in groups of two or three to dive into prayer and the Word, and a sustainable discipleship structure was launched.



HEALTHY CHURCH FORMATION

In 2019, our team in London saw more than three dozen immigrants from a southeastern European country come to faith in Jesus Christ through the dedicated work of our local partners. Just over 18 months ago, we trained these partners in the tools of entry, evangelism, discipleship, church formation, and leadership development. Through faithful use of these tools, a whole new network of disciples and leaders was formed that now stretches from London all the way back to the immigrants’ homeland. We ask for prayer as these new disciples gather in a new church plant. They are already training new leaders and disciple-makers to multiply this church and these disciples for the glory of God among the nations!



LEADERSHIP DEVELOPMENT

In a large European city, more than 200 nationals were trained in various ministry areas from evangelism to discipleship to small group leadership. Among the student ministry they were able to see second generation trainers.



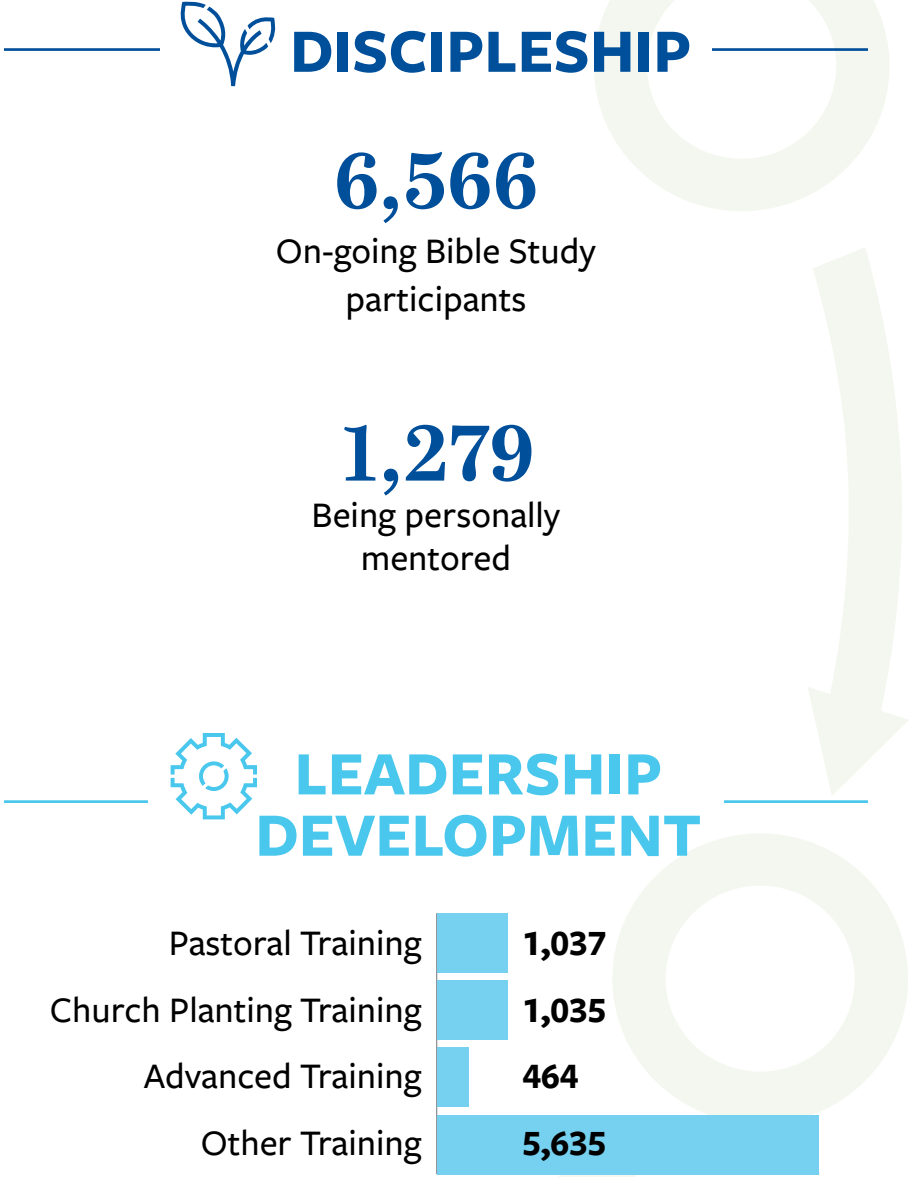
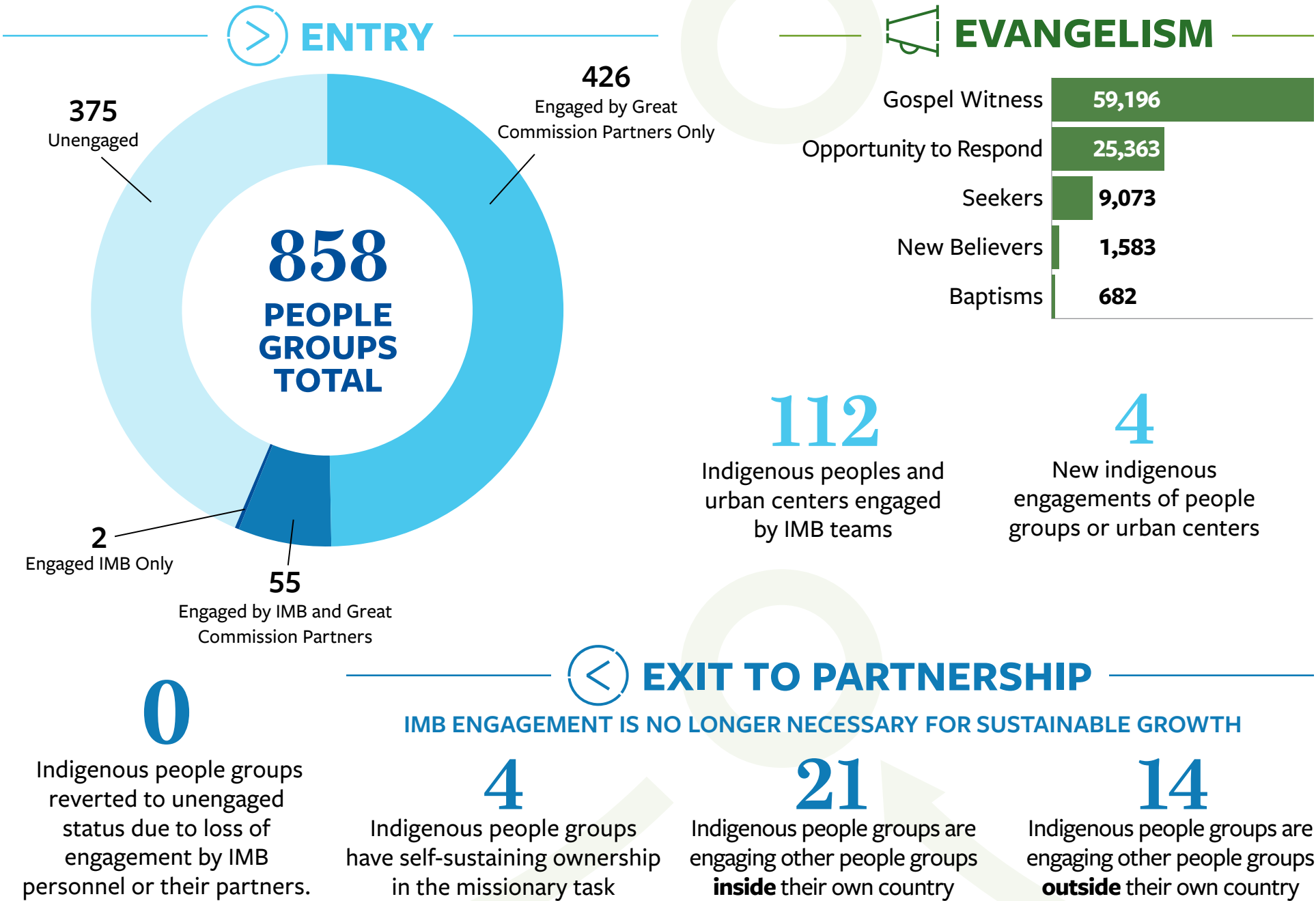
EXIT TO PARTNERSHIP

Initially sent to reach Central Asians, IMB workers are now partnering with European churches to mobilize their own missionaries to reach the nations. God has used this partnership to revitalize sleepy national churches and rekindle a passion for God’s mission. Churches across this European country are now responding to God’s call to reach millions of international students and migrant workers who have moved into their cities with the gospel of Christ.

“In addition, brothers and sisters, pray for us that the word of the Lord may spread rapidly and be honored, just as it was with you.”

— 2 Thessalonians 3:1 (CSB)

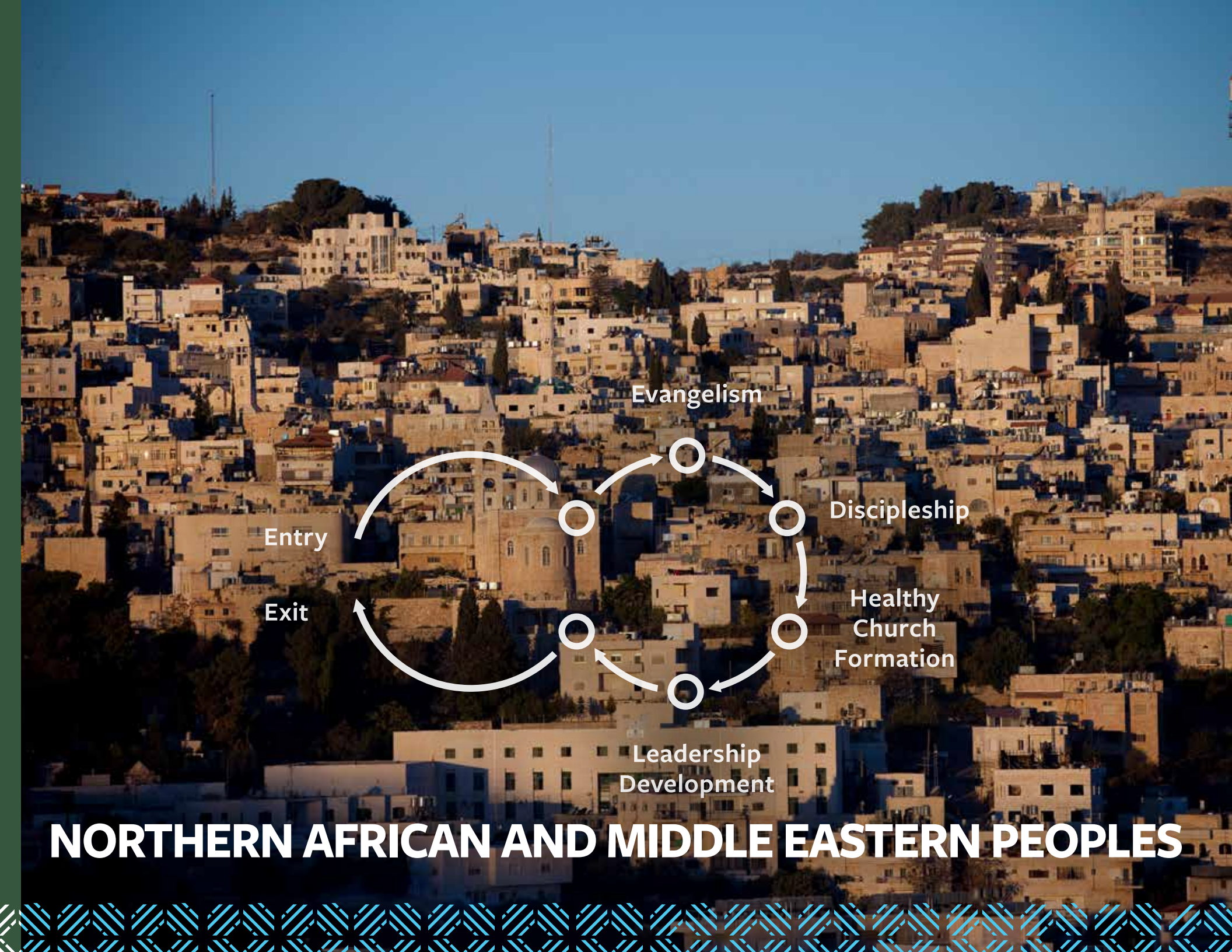
Summaries



EUROPEAN PEOPLES

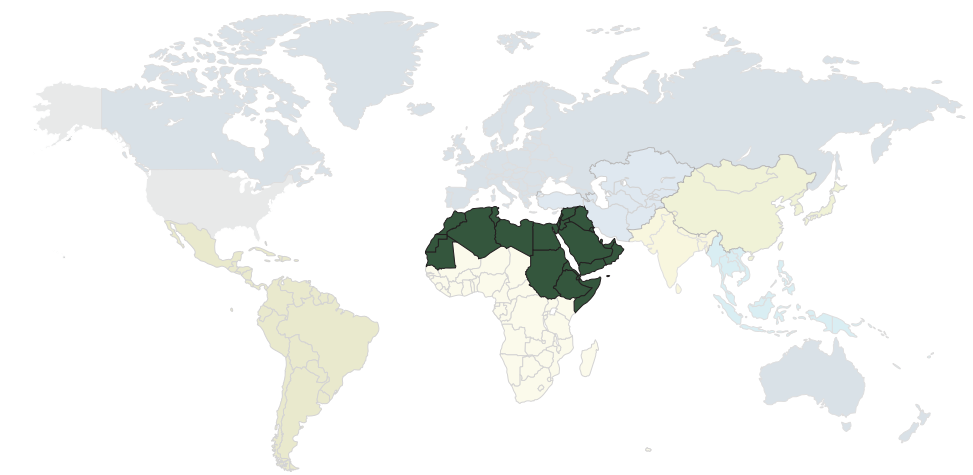
HEALTHY CHURCH
FORMATION

New Groups	69
Groups	169
New Churches	40
1 st Generation	18
2 nd Generation	17
3 rd Generation	5
Total Churches	153
1 st Generation	95
2 nd Generation	45
3 rd Generation	13
Baptized Believers Meeting	10,489



NORTHERN AFRICAN AND MIDDLE EASTERN PEOPLES

Highlights | NORTHERN AFRICAN AND MIDDLE EASTERN PEOPLES




162
NEW CHURCHES
PLANTED


31,460
HEARD GOSPEL WITNESS


19,325
OPPORTUNITY TO RESPOND

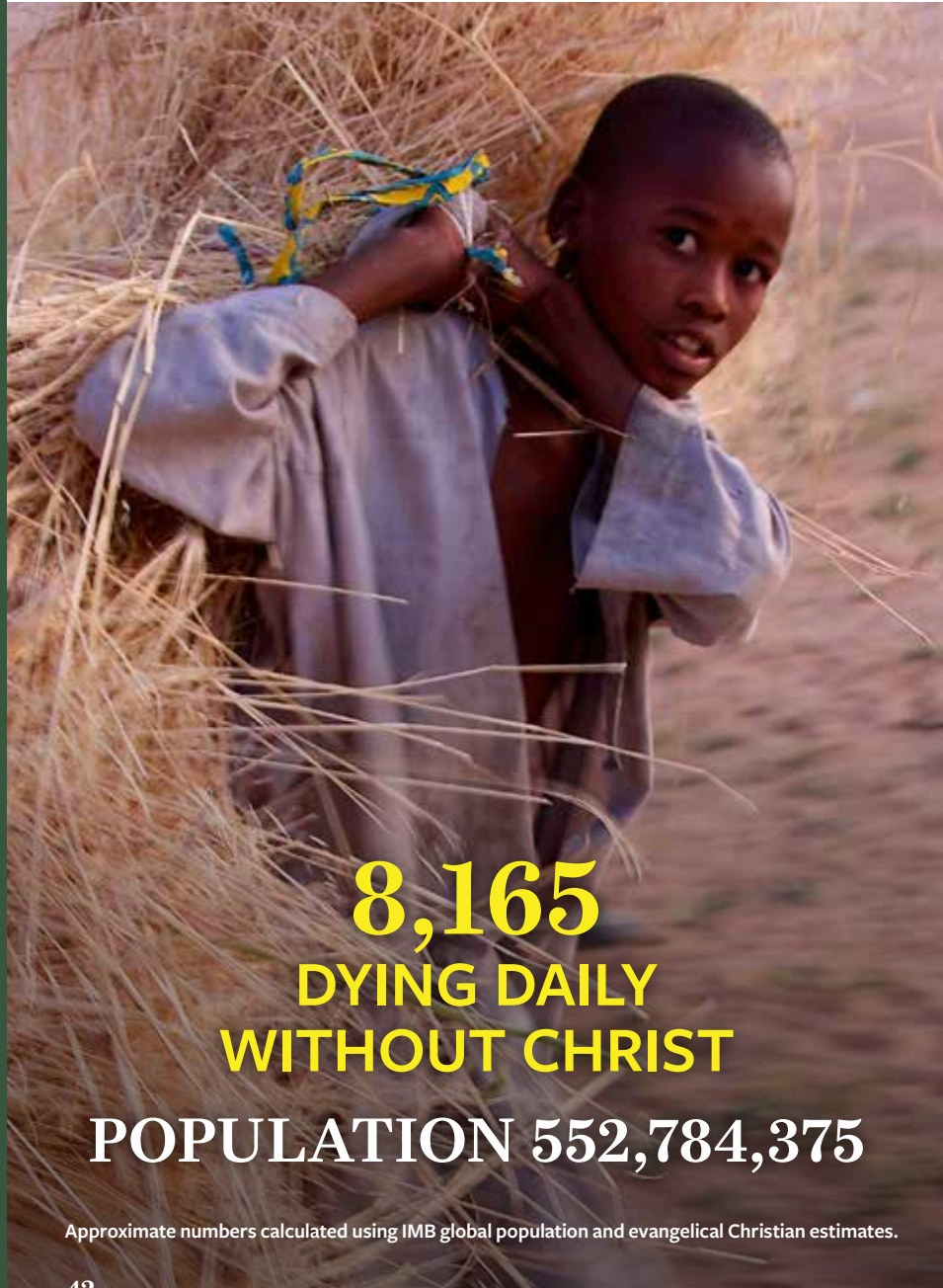

4,686
NEW BELIEVERS


1,394
BAPTISMS


1,706
LEADERSHIP TRAININGS


1
NEW ENGAGEMENT

Stories from the Field



8,165
DYING DAILY
WITHOUT CHRIST

POPULATION 552,784,375

Approximate numbers calculated using IMB global population and evangelical Christian estimates.



ENTRY

A few months ago, three workers went out to share with people in the park. They met Amina* and shared the gospel with her. Amina said she’s wanted to know more about Jesus for some time now, because once while getting on the ferry to North Africa she got a packet with a New Testament and the Jesus film in it. She said she kept the New Testament and watched the film and that she was deeply touched by the story and the love of Jesus. She still holds to Islam but when the workers asked her if she wanted to read more stories of Jesus together, she said yes. Since that time, they have been meeting together. Even last week, she said she believes that only Jesus can forgive sins and that he died and rose again.

*Name changed



EVANGELISM

A clinic, a gym, a coffee shop, a living room, the barbershop, the park, a classroom — these are places where evangelism is happening as people are asked, “You are different from other foreigners we know. Why?” or “I am [another faith], and you are Christian. We are all the same, right?” Praise God for the life-on-life evangelism going on every day as Christian workers interact with people in their communities.

NORTHERN AFRICAN AND MIDDLE EASTERN PEOPLES



DISCIPLESHIP

Amal* came to faith from conversations she had online with someone in North America, but she wanted to study face-to-face with other believers. She met with two workers, and the fellowship was sweet as they opened the Word together. When they came to the lesson on prayer, Amal was afraid to pray out loud. “It’s a conversation with Jesus. You can do it.” And she did. Praise God for each step as new believers grow in faith.

*Name changed



HEALTHY CHURCH FORMATION

A small group of men sit together in a simple apartment. They have fellowship, study the Word and pray together. They are not a church, but they are the ‘beginnings’ of what will become a church one day. Praise God for the many small groups who are meeting. Praise God with faith, that each will grow to become church.

“But I do not account my life of any value nor as precious to myself, if only I may finish my course and the ministry that I received from the Lord Jesus, to testify to the gospel of the grace of God.”

— Acts 20:24 (ESV)



LEADERSHIP DEVELOPMENT

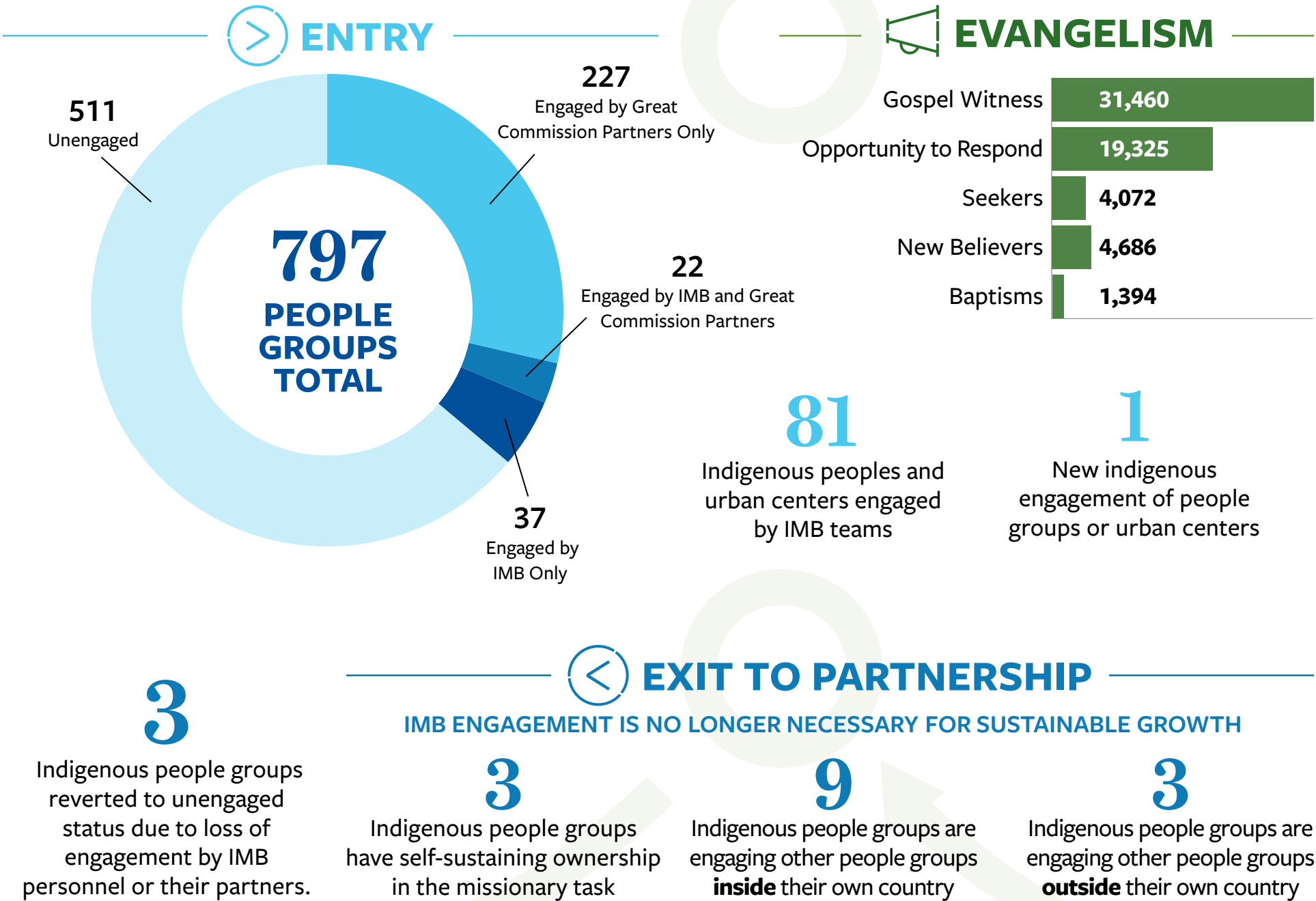
A seasoned worker in North Africa with a passion for training leaders began to devote most of his time to training local and foreign believers in evangelism, discipleship, church planting, and leadership. During this year, he was able to train national leaders across North Africa as well as many new foreign leaders. They are eager to put this material into practice.



EXIT TO PARTNERSHIP

Many national leaders from Asia and NAME met to get to know each other, share stories and discuss what God is doing in their lives. Workers from each country explained their own strategies, translating and explaining culture in the process. Together they began to formulate strategies for sending and receiving workers to take the gospel throughout NAME. What a picture of the Body of Christ, working together as partnerships are formed with people from all over the globe.

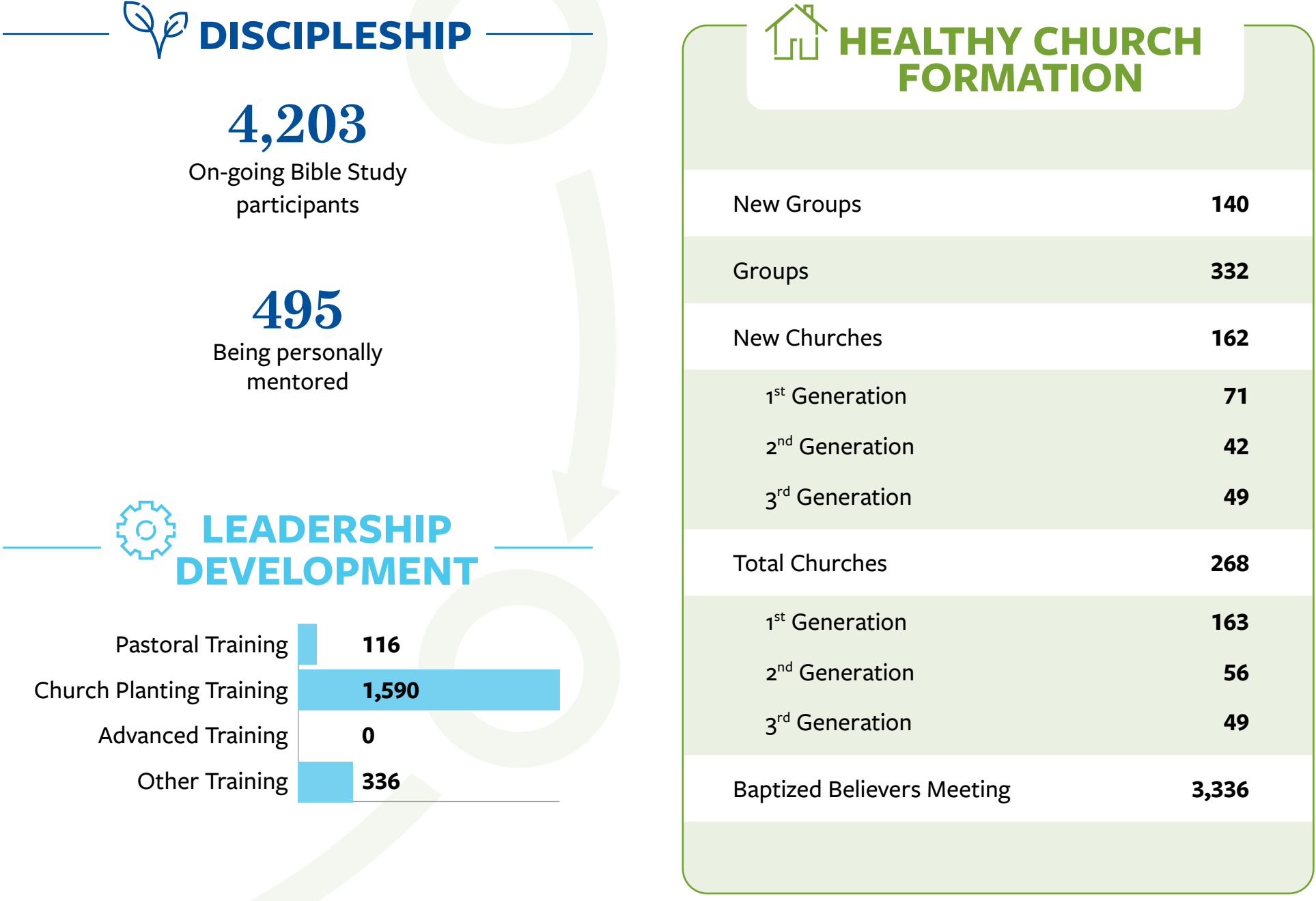
Summaries



IMB ENGAGEMENT IS NO LONGER NECESSARY FOR SUSTAINABLE GROWTH

3
Indigenous people groups
reverted to unengaged
status due to loss of
engagement by IMB
personnel or their partners.3
Indigenous people groups
have self-sustaining ownership
in the missionary task9
Indigenous people groups are
engaging other people groups
inside their own country3
Indigenous people groups are
engaging other people groups
outside their own country

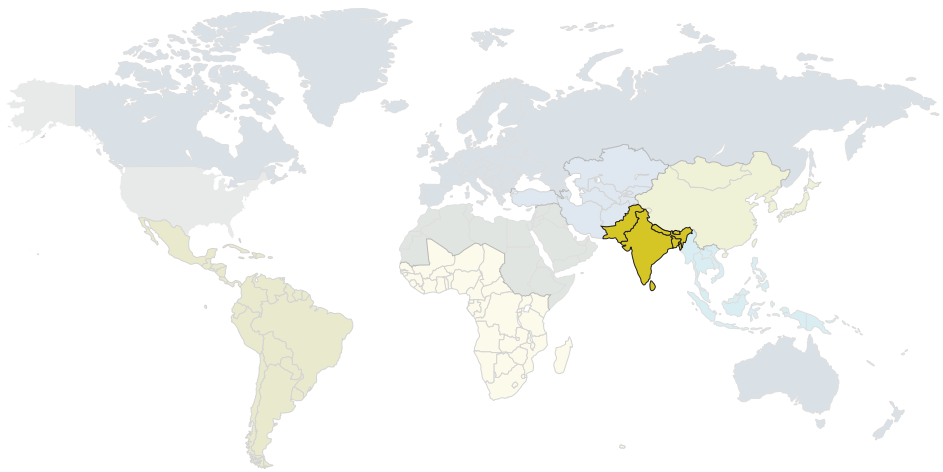
NORTHERN AFRICAN AND MIDDLE EASTERN PEOPLES





SOUTH ASIAN PEOPLES

Highlights | SOUTH ASIAN PEOPLES




9,911
NEW CHURCHES
PLANTED


103,328
HEARD GOSPEL WITNESS


89,385
OPPORTUNITY TO RESPOND


35,183
NEW BELIEVERS


29,286
BAPTISMS


65,334
LEADERSHIP TRAININGS


62
NEW ENGAGEMENTS

Stories from the Field

SOUTH ASIAN PEOPLES



32,718
DYING DAILY
WITHOUT CHRIST

POPULATION 1,738,042,206

Approximate numbers calculated using IMB global population and evangelical Christian estimates.



ENTRY

In 2019, many people were affected by floods in South Asia. One village of 60 families was nearly destroyed. Because the area was not registered as being flood prone, no governmental aid is available. Give thanks to the Lord that believers were able to provide relief supplies in the name of Jesus and the people both heard and saw the love of Jesus!



EVANGELISM

Recently some pastors along with their small congregations decided to dedicate 30 minutes a day for 30 days to talk to people intentionally about Jesus. Over the course of one month, these faithful individuals shared with more than 7,000 people! Praise God for their gospel witness and that many people living in darkness have now seen a great light!



DISCIPLESHIP

Amit* is a faithful disciple maker who, over the past two years, has been sharing the gospel in new unreached places. For example, in one village he began visiting a home to share 35 chronological Bible lessons. This family was saved, becoming the village's first believers. Over several months, this family began sharing the gospel with others. Now there are 18 believing families and 55 in-home Bible studies in this village where they are sharing 35 chronological Bible lessons with the help of SD cards.

*Name changed



HEALTHY CHURCH FORMATION

In October, some mature believers began an eight-month training cycle to mentor other believers in church planting. They are mentoring church planters in the components of the core missionary task: abiding in Christ, entering new harvest fields, proclaiming the gospel, grouping and discipling believers, forming healthy churches, developing leaders, and entrusting the work to local leaders and churches.



LEADERSHIP DEVELOPMENT

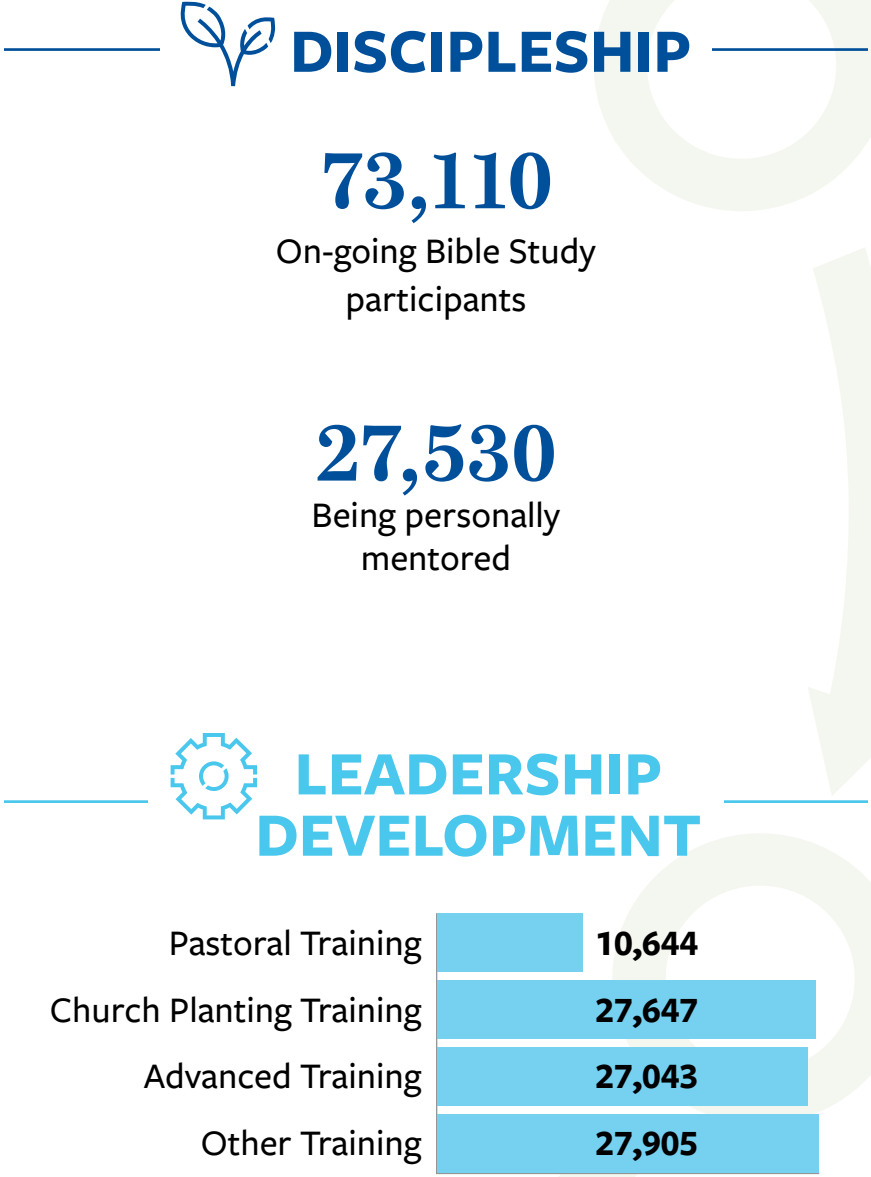
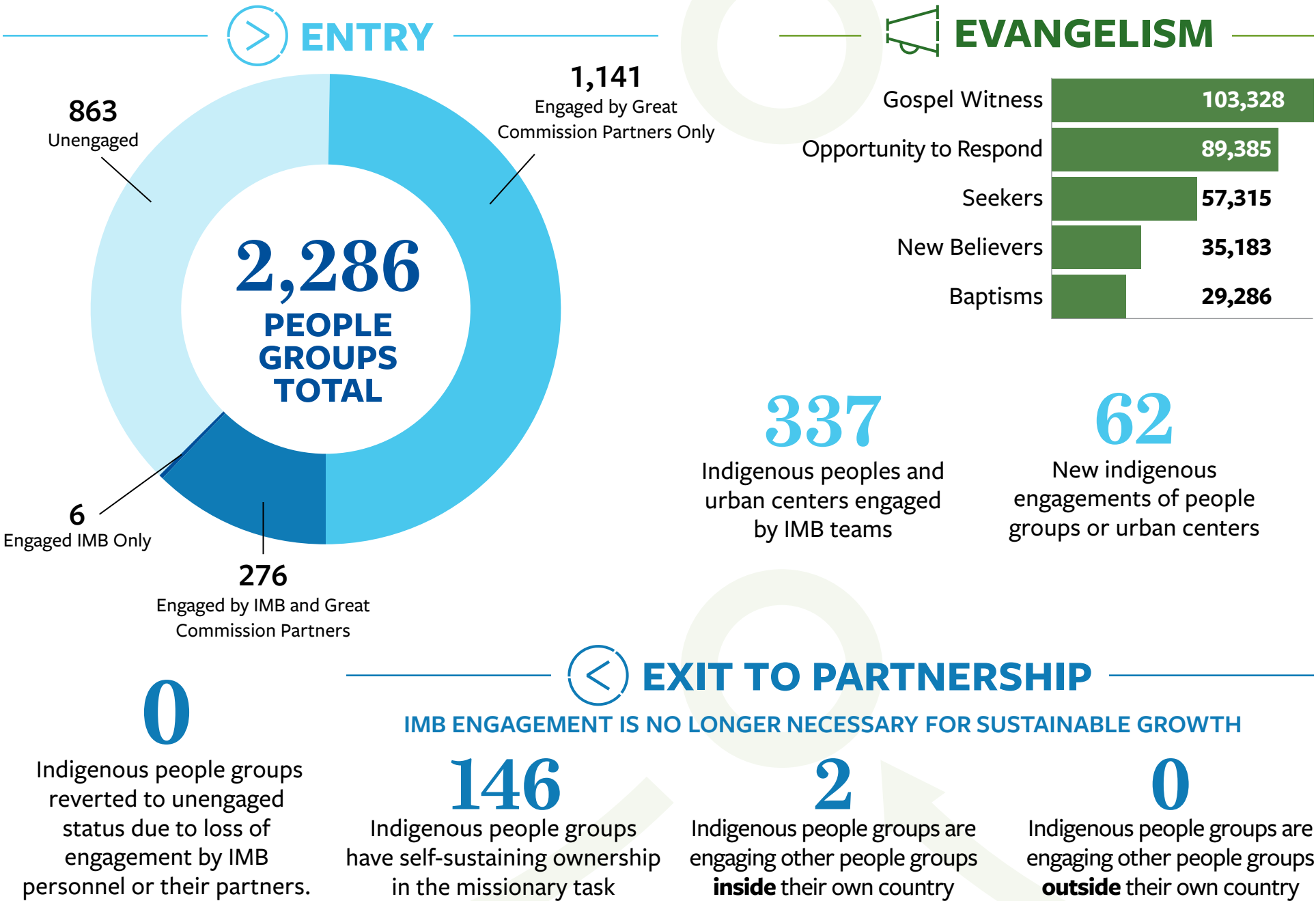
Manny* and his family are committed to reaching people throughout the world with the gospel, so they have made their life's work a small missions training school. This school is located in a highly concentrated area of followers of other faiths, and the family hopes to engage with those around them.

*Name changed

“Rather as it is written: ‘Those who were not told about him will see, and those who have not heard will understand.’”

— Romans 15:21 (NIV)

Summaries



SOUTH ASIAN PEOPLES

>

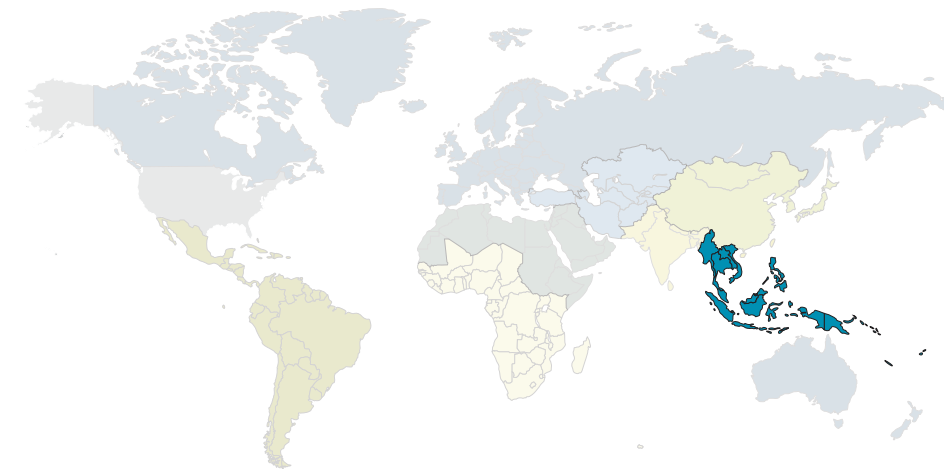
HEALTHY CHURCH FORMATION

New Groups	10,680
Groups	28,067
New Churches	9,911
1 st Generation	181
2 nd Generation	66
3 rd Generation	9,664
Total Churches	45,514
1 st Generation	11,522
2 nd Generation	3,360
3 rd Generation	30,632
Baptized Believers Meeting	128,996



SOUTHEAST ASIAN PEOPLES

Highlights | SOUTHEAST ASIAN PEOPLES




1,615
NEW CHURCHES
PLANTED



67,767

HEARD GOSPEL WITNESS



46,466

OPPORTUNITY TO RESPOND



7,955

NEW BELIEVERS



5,581

BAPTISMS



7,029

LEADERSHIP TRAININGS



1

NEW ENGAGEMENT

Stories from the Field

SOUTHEAST ASIAN PEOPLES



ENTRY

Due to volunteers constructing a drinking water system for a local prison, guards who were initially restrictive allowed IMB workers access to several prisoners, including 10 women. Many prisoners sang songs to Jesus, and one believed. We are praying to meet and teach more.



EVANGELISM

Threats can come when sharing the gospel among hostile people groups, but prayer and the Lord's direction can lead to salvation. Despite persecution while delivering Bibles, two young workers listened, obeyed, and were able to share the gospel and begin Bible studies among an unreached people group.



DISCIPLESHIP

A family among a large unreached people group had to flee their community because of vengeance killings and found refuge in a local church. The family heard the gospel and watched the life of believers in the church. The family was saved and baptized. The Pastor and his church have discipled the family and are equipping them to return to their community so others may hear the gospel and experience a transformed life.



HEALTHY CHURCH FORMATION

IMB held a training event for 600 house-church leaders in Southeast Asia in December of 2019 using curriculum for New Testament Survey and studying the parables.



EXIT TO PARTNERSHIP

IMB helped establish a national-led sending organization, which has projected sending six families this year to serve among UPGs. This is fruit from IMB's 15-year investment in national partners.

“Therefore do not be ashamed of the testimony about our Lord ... but share in suffering for the gospel by the power of God, who saved us and called us to a holy calling, not because of our works but because of his own purpose and grace, which he gave us in Christ Jesus before the ages began.”

— 2 Timothy 1:8-9 (ESV)

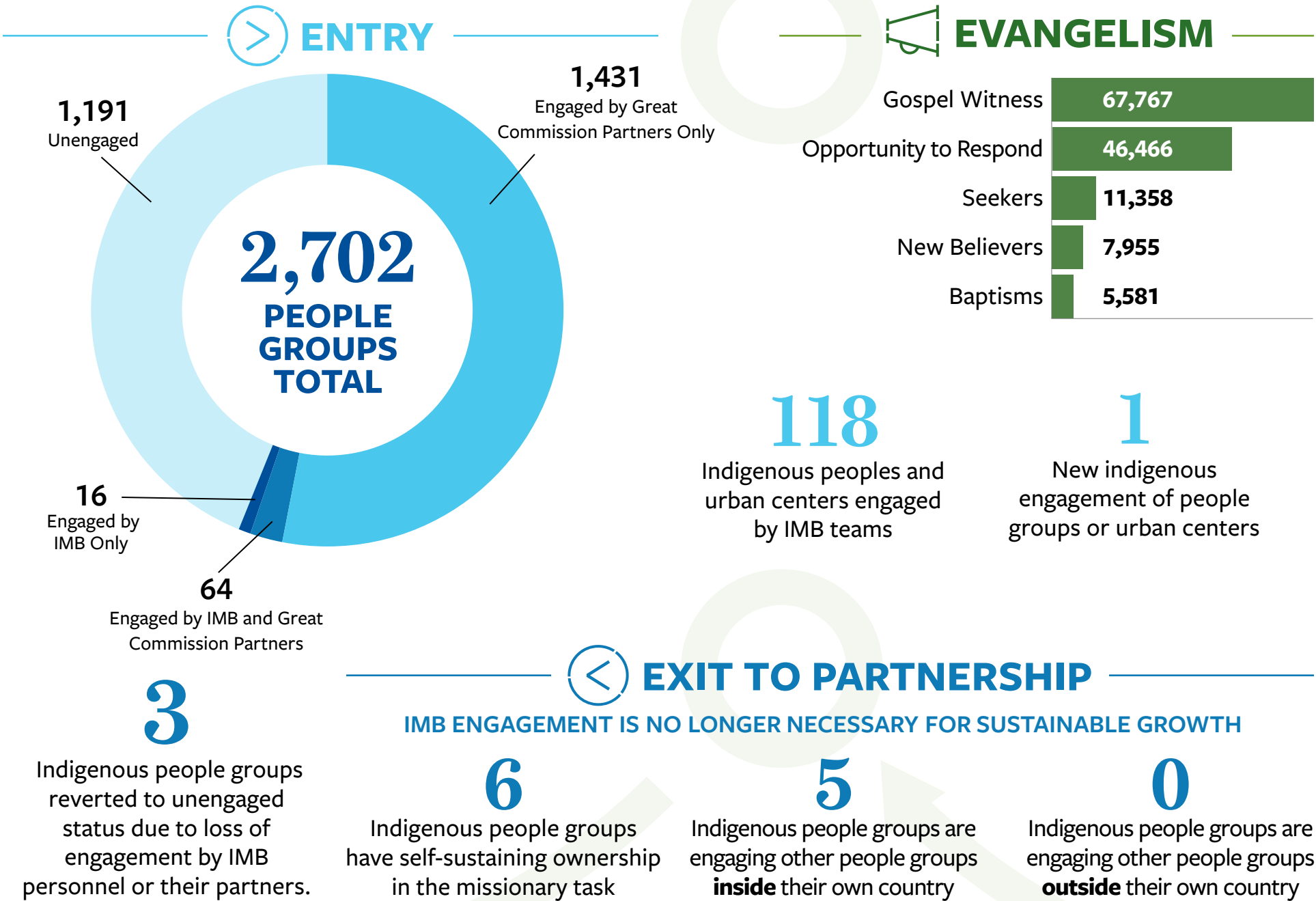


11,132
DYING DAILY
WITHOUT CHRIST

POPULATION 627,776,360

Approximate numbers calculated using IMB global population and evangelical Christian estimates.

Summaries



<

EXIT TO PARTNERSHIP

3

Indigenous people groups reverted to unengaged status due to loss of engagement by IMB personnel or their partners.

6

Indigenous people groups have self-sustaining ownership in the missionary task

5

Indigenous people groups are engaging other people groups **inside** their own country

1

New indigenous engagement of people groups or urban centers

0

Indigenous people groups are engaging other people groups **outside** their own country

EVANGELISM

Gospel Witness67,767

Opportunity to Respond46,466

Seekers11,358

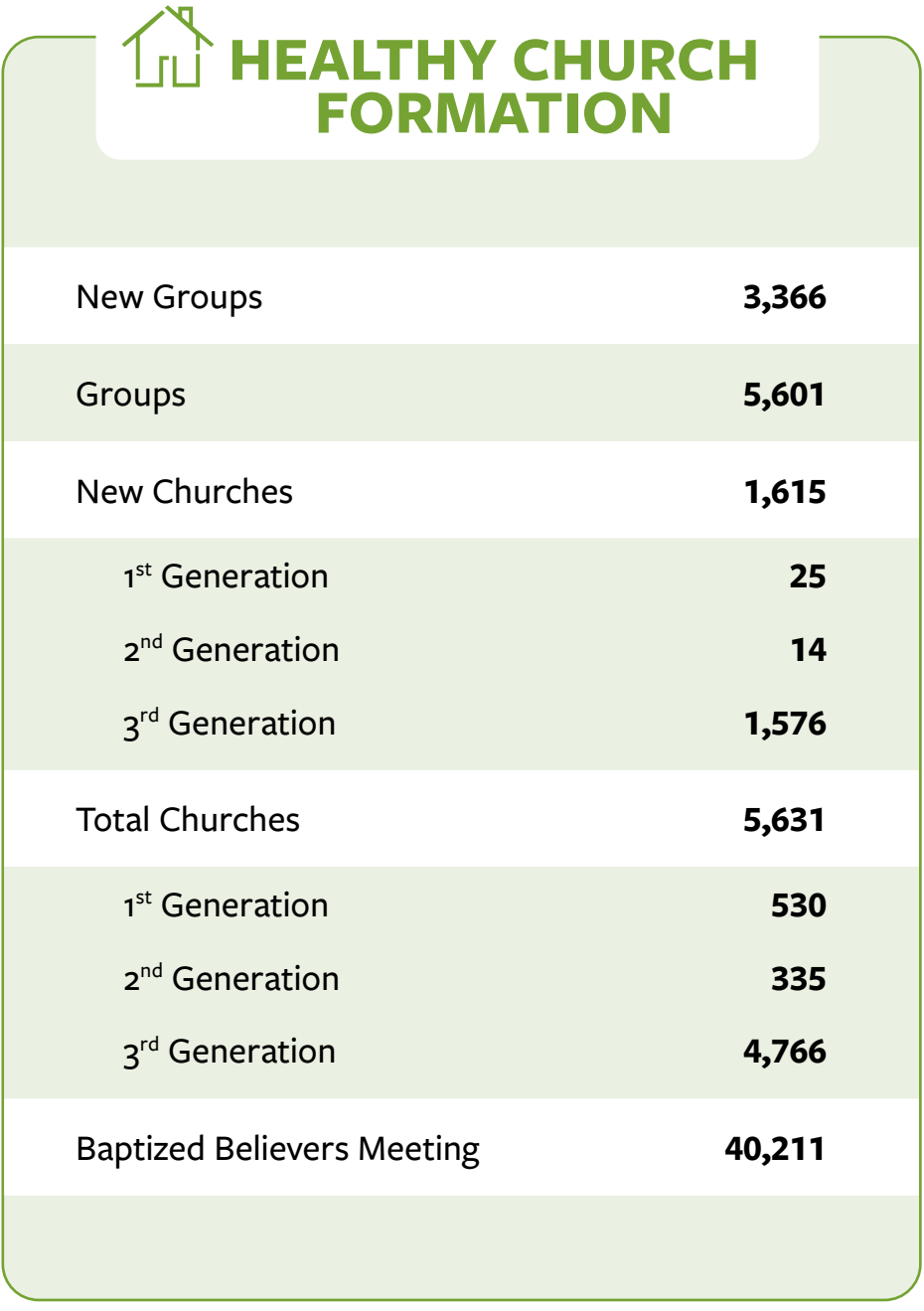
New Believers7,955

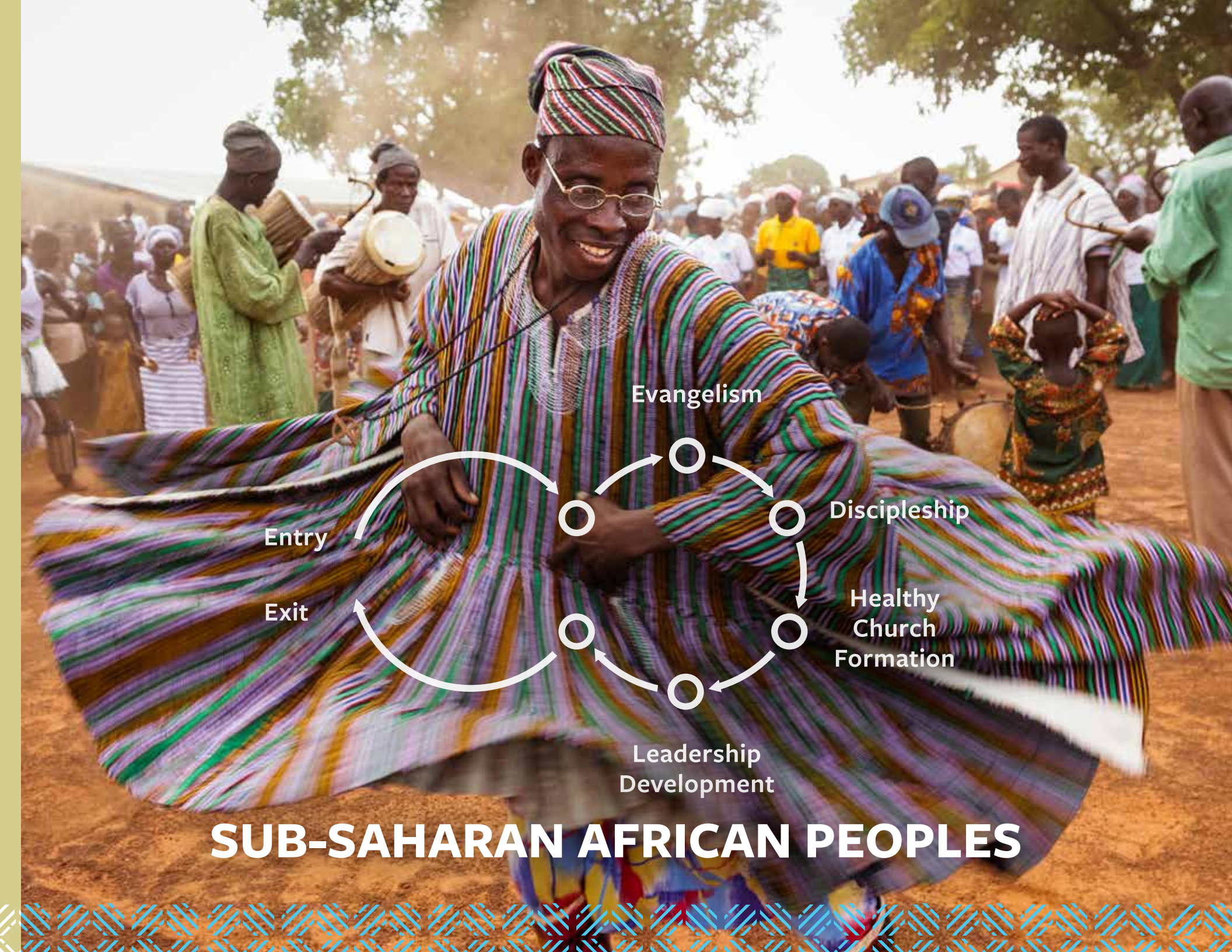
Baptisms5,581

118

Indigenous peoples and urban centers engaged by IMB teams

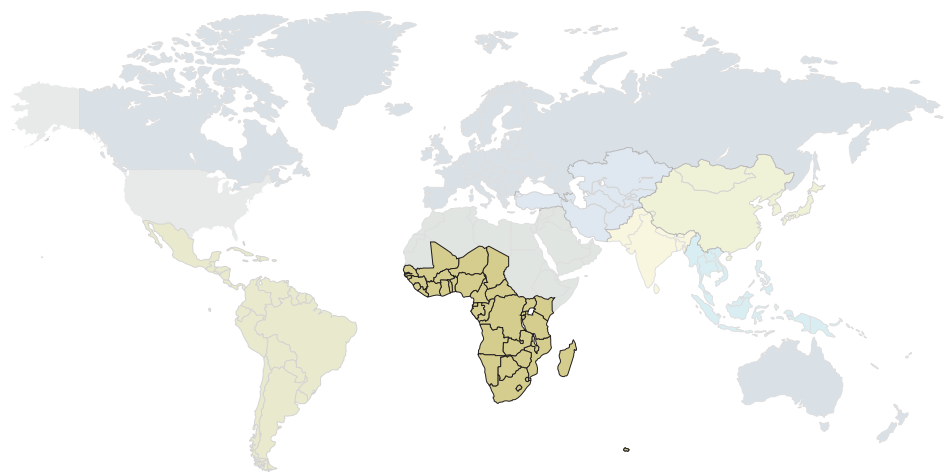
SOUTHEAST ASIAN PEOPLES





SUB-SAHARAN AFRICAN PEOPLES

Realities | SUB-SAHARAN AFRICAN PEOPLES




111
NEW CHURCHES
PLANTED


95,253
HEARD GOSPEL WITNESS


82,193
OPPORTUNITY TO RESPOND


20,775
NEW BELIEVERS


3,982
BAPTISMS


2,632
LEADERSHIP TRAININGS


2
NEW ENGAGEMENTS

Stories from the Field

SUB-SAHARAN AFRICAN PEOPLES



19,133
DYING DAILY
WITHOUT CHRIST
POPULATION 875,801,255

Approximate numbers calculated using IMB global population and evangelical Christian estimates.



ENTRY

Evangelism through teaching English, as well as partnerships with both West African students and a Fusion team, have led to an on-going Bible study with 25 people and increased the spread of the gospel and people coming to Christ.



EVANGELISM

Using LifeStyle evangelism, IMB workers in this West African country saw a 300% increase in the number of witnesses and people coming to faith in Christ in our local Baptist churches.



DISCIPLESHIP

Working with U.S. Baptists and nationals, IMB workers in West Africa saw five new believers, the first on this island, who are being discipled and baptized. These new believers are evangelizing and growing their faith. More believers are added each trip, and a movement towards church formation is beginning.



HEALTHY CHURCH FORMATION

VBS ministry and neighborhood evangelism were used to plant two new churches. Partnerships between national leaders and U.S. pastors resulted in three other new churches. In addition, God worked in the hearts of an elderly couple to plant another church in a nearby village complete with mud block walls and a grass roof.



LEADERSHIP DEVELOPMENT

Responding to requests of local church leaders, four churches partnered to train leaders and church members. IMB and Brazilian Baptists are training and equipping African pastors to be effective leaders with sound theology.



EXIT TO PARTNERSHIP

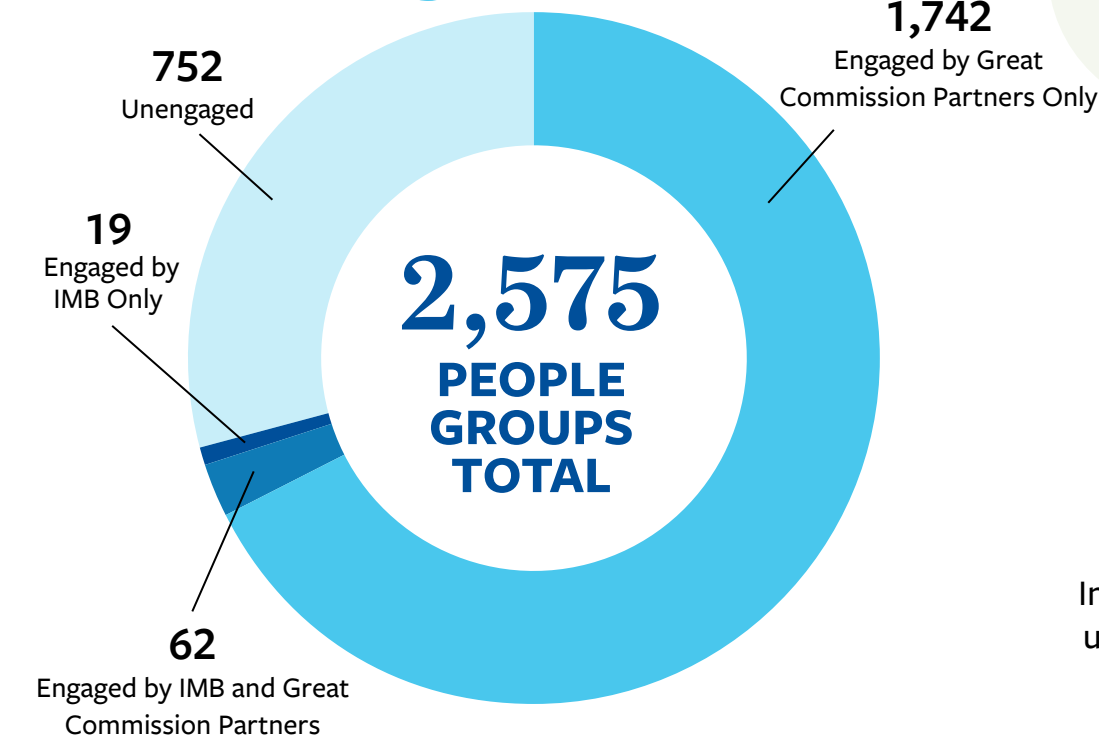
Beginning in 2009, six men were trained in the missionary task; now our personnel continue in relationship but no longer lead this work. Through their obedience to the Great Commission, these men have formed two separate teams to evangelize in multiple locations.

“Behold, you shall call a nation that you do not know, and a nation that did not know you shall run to you, because of the Lord your God, and of the Holy One of Israel, for he has glorified you.”

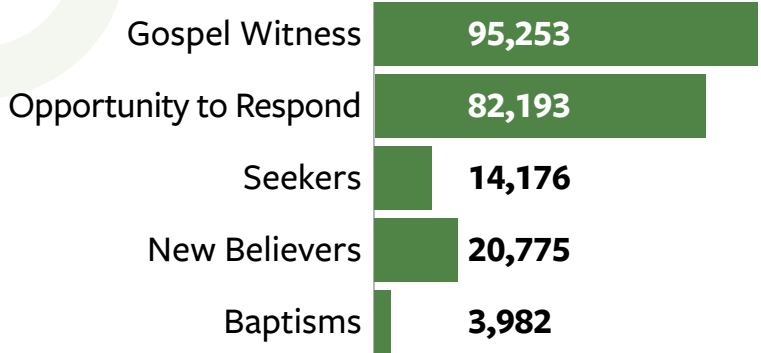
— Isaiah 55:5 (ESV)

Summaries

ENTRY



EVANGELISM



108

Indigenous peoples and urban centers engaged by IMB teams

2

New indigenous engagements of people groups or urban centers

EXIT TO PARTNERSHIP

IMB ENGAGEMENT IS NO LONGER NECESSARY FOR SUSTAINABLE GROWTH

1

Indigenous people group reverted to unengaged status due to loss of engagement by IMB personnel or their partners.

11

Indigenous people groups have self-sustaining ownership in the missionary task

16

Indigenous people groups are engaging other people groups **inside** their own country

2

Indigenous people groups are engaging other people groups **outside** their own country

DISCIPLESHIP

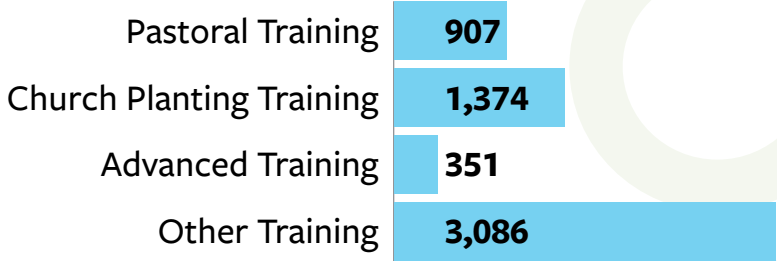
32,216

On-going Bible Study participants

1,347

Being personally mentored

LEADERSHIP DEVELOPMENT



SUB-SAHARAN AFRICAN PEOPLES

HEALTHY CHURCH FORMATION

New Groups	428
Groups	703
New Churches	111
1 st Generation	42
2 nd Generation	56
3 rd Generation	13
Total Churches	1,084
1 st Generation	573
2 nd Generation	229
3 rd Generation	282
Baptized Believers Meeting	40,961



———— 2025 Targets ————

to engage unreached peoples and places

- Mobilize 75% of Southern Baptist churches prayerfully and financially supporting LMCO
- Send an additional 500 fully funded missionaries
- Mobilize 500 global missionary partners on IMB teams
- Engage 75 global cities in comprehensive strategies
- Increase LMCO receipts 6% annually

Every church. Every nation.

imb

imb.org

175
SINCE 1845

For more information about this report, contact the Global Research Information Center at gric@imb.org